

DESCRIPTION

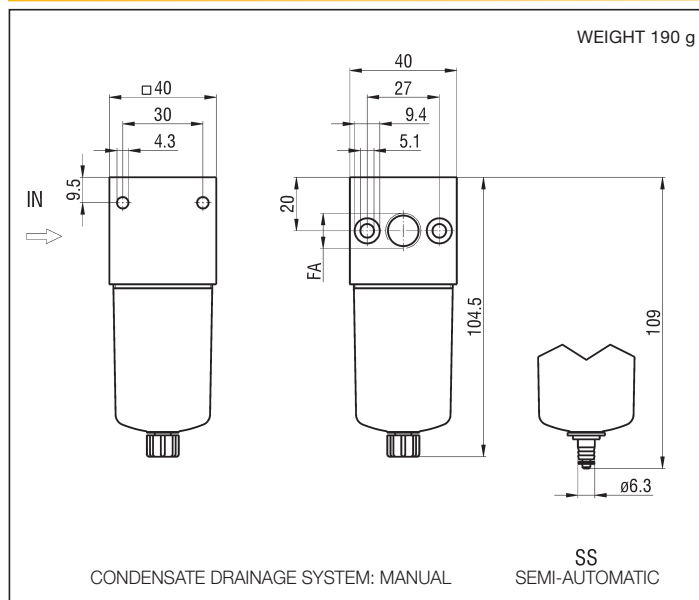
Filters series "UZF" are produced with connections G 1/4; they are available with various degrees of filtration and with manual or semi-automatic condensate drainage system. The techno-polymer bowls can carry a metallic protection or being entirely metallic (without visualization of level). They are in compliance with ATEX directive, 2GD category, upon request.

TECHNICAL DATA

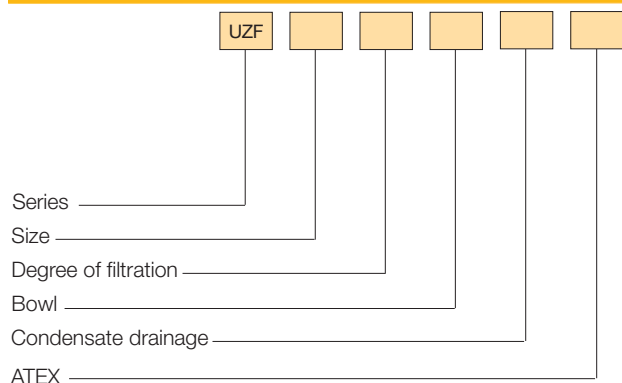
Maximum pressure	16 bar
Working temperature	0 ÷ +50 °C (-10 °C with dry air)
Fluid	Compressed air
Port size	G 1/4
Void fraction	20 µm standard, 5 µm and 40 µm upon request
Condensate drainage system	Manual or semi-automatic
Max. condensate capacity	9 cm ³ (do not exceed the level gauge)
Type of mounting	Modular, in-line and wall-mounting
Wall clamping screws	M4x50

4

DIMENSIONS AND WEIGHT - UZF G 1/4



ORDER KEY



SPARE PARTS

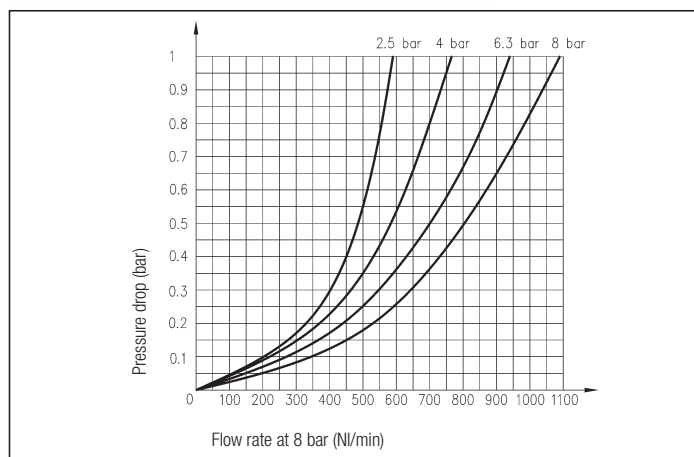
Metallic protection	UZ/PM
Metallic bowl with manual drain	UZ/TM/R
Metallic bowl with semi-automatic drain	UZ/TM/R/SS
Techno-polymer bowl with manual drain	UZF/SG/3
Techno-polymer bowl with semi-automatic drain	UZF/SG/3/SS
Filter cartridge 5 µm	UZF/SG/1
Filter cartridge 20 µm	UZF/SG/2
Filter cartridge 40 µm	UZF/SG/4



MATERIALS

Body	Aluminium alloy
Bowl	Transparent techno-polymer with metallic protection or entirely metallic bowl (without visualization of level)
Filtering element	Sintered polyethylene 5 µm - orange 20 µm - white 40 µm - grey
Seals	NBR rubber
Baffle	Acetal resin

FLOW CHART - UZF



SIZE

4 G 1/4

DEGREE OF FILTRATION

/5 5 µm /20 20 µm
/40 40 µm

BOWL

Transparent PM Metallic protection
TM Metallic

CONDENSATE DRAINAGE SYSTEM

Manual /SS Semi-automatic

ATEX

/EX Consistent with the ATEX directive Ex II 2GD c T5 T100°C -10°C ≤ Ta ≤ 50°C*

Air treatment: pressure reducer UZRR G 1/4

series UZ

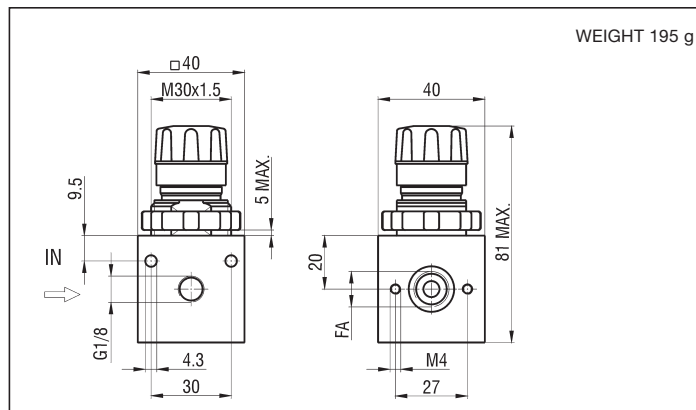
DESCRIPTION

Reducers series "UZRR" are produced in two different models: type UZRRH, fit for in-line or panel mounting and type UZRRM, fit for panel mounting or modular assembly (with filter and lubricator). Both the two models are available with different scales of regulation and with connections G 1/4. They are in compliance with ATEX directive, 2GD category, upon request.

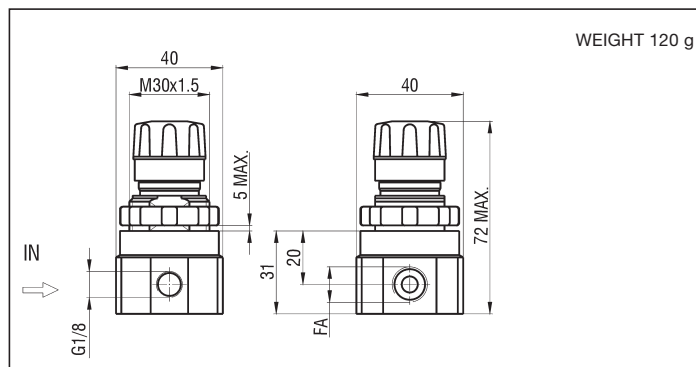
TECHNICAL DATA

Maximum pressure	16 bar
Working temperature	0 ÷ +50 °C (-10 °C with dry air)
Fluid	Filtered, lubricated and unlubricated compressed air
Port size	G 1/4
Pressure gauge port size	G 1/8
Adjusting range (bar)	0,2 ÷ 2 - 0,4 ÷ 4 - 0,8 ÷ 9 - 1,5 ÷ 12
Type of mounting	Modular, in-line, wall and panel mounting
Wall clamping screws	M4x50

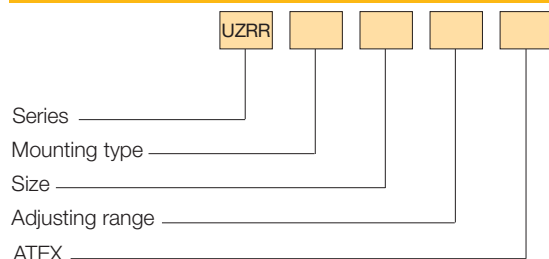
DIMENSIONS AND WEIGHT - UZRRM G 1/4



DIMENSIONS AND WEIGHT - UZRRH G 1/4



ORDER KEY



SPARE PARTS

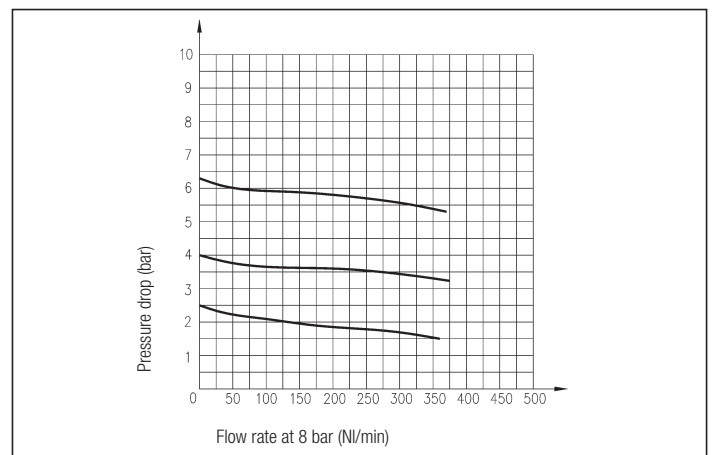
Relieving kit adjustment	UZRR/SG/6
Non-relieving kit adjustment	UZRR/SG/5



MATERIALS

Body	Aluminium alloy
Closing plug	Brass, NBR rubber
Spring	Stainless steel
Knob	Acetal resin
Adjusting screw	Brass
Diaphragm	Brass, NBR rubber

FLOW CHART - UZRR



MOUNTING TAPE

H	For panel mounting	M	Modular
---	--------------------	---	---------

SIZE

4	G 1/4
---	-------

ADJUSTING RANGE

/3	0,2 ÷ 2 bar	/5	0,4 ÷ 4 bar
/7	0,8 ÷ 9 bar	/12	1,5 ÷ 12 bar

ATEX

/EX Consistent with the ATEX directive II 2GD c T5 T100°C -10°Cs Tas50°C

P.S.: Reducers can be supplied without the relieving seal on request; the series becomes **UZR**...

series UZ

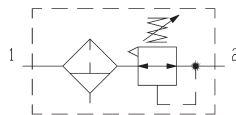
Air treatment: filter reducer UZRRM /F G 1/4

DESCRIPTION

Filter reducer series "UZRRM/F", produced with connections G 1/4, combine the characteristics of the filters and of the pressure reducers "UZ", thus optimising the overall dimension. They are in compliance with ATEX directive, 2GD category, upon request.

TECHNICAL DATA

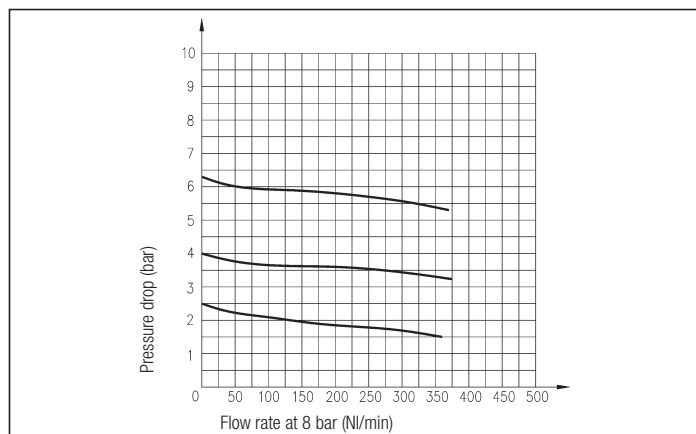
Maximum pressure	16 bar
Working temperature	0 ÷ +50 °C (-10 °C with dry air)
Fluid	Compressed air
Port size	G 1/4
Pressure gauge port size	G 1/8
Void fraction	20 µm standard, 5 µm and 40 µm on request
Condensate drainage system	Manual or semi-automatic
Max. condensate capacity	9 cm ³ (do not exceed the level gauge)
Adjusting range (bar)	0,2 ÷ 2 - 0,4 ÷ 4 - 0,8 ÷ 9 - 1,5 ÷ 12
Type of mounting	Modular, in-line, wall and panel mounting
Wall clamping screws	M4x50



MATERIALS

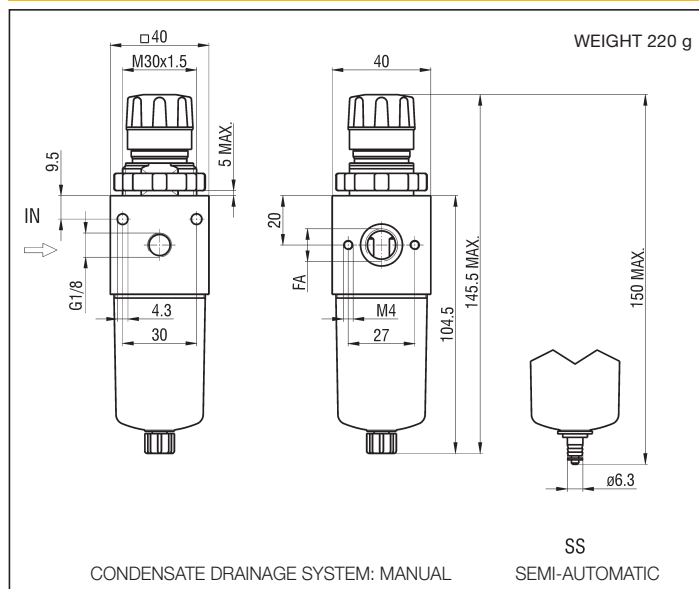
Body	Aluminium alloy
Bowl	Transparent techno-polymer with metallic protection or entirely metallic bowl (without visualization of level) on request
Filtering element	Sintered polyethylene 5 µm - orange 20 µm - white 40 µm - grey
Seals	NBR rubber
Baffle	Acetal resin
Closing plug	Brass, NBR rubber
Spring	Stainless steel
Knob	Acetal resin
Adjusting screw	Brass
Diaphragm	Brass, NBR rubber

FLOW CHART - UZRRM /F



4

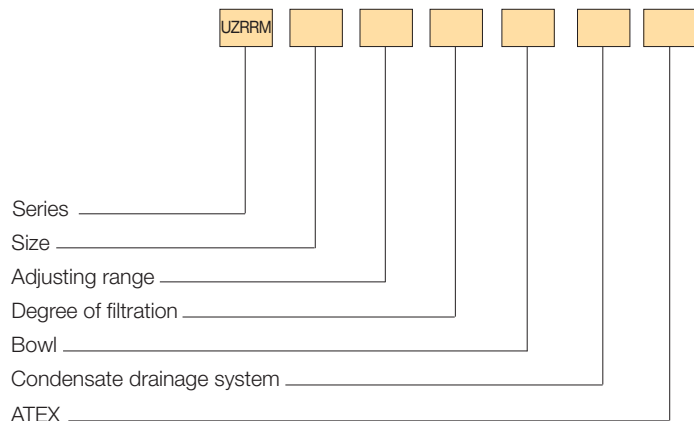
DIMENSIONS AND WEIGHT - UZRRM /F



SPARE PARTS

See series "UZF" (on page 4.3) and "UZRR" (on page 4.4)

ORDER KEY



P.S.: Filters reducers can be supplied without the relieving seal on request; the series becomes **UZRM**...

SIZE

4 G 1/4

ADJUSTING RANGE

/3 0,2 ÷ 2 bar /5 0,4 ÷ 4 bar
/7 0,8 ÷ 9 bar /12 1,5 ÷ 12 bar

DEGREE OF FILTRATION

F5 5 µm F20 20 µm
F40 40 µm

BOWL

Transparent PM Metallic protection
TM Metallic

CONDENSATE DRAINAGE SYSTEM

Manual /SS Semi-automatic

ATEX

/EX Consistent with the ATEX directive II 2GD c T5 T100°C -10°C ≤ Ta ≤ 50°C*

Air treatment: lubricator UZL G 1/4

series UZ

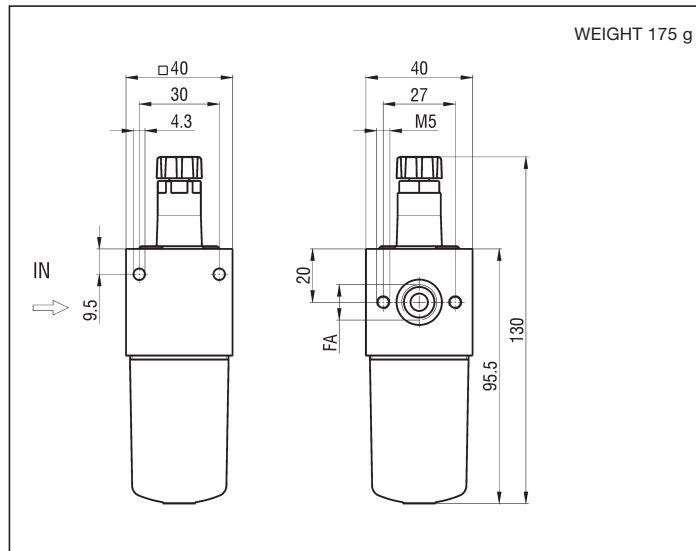
DESCRIPTION

Lubricators series "UZL" are produced with connections G 1/4; the techno-polymer bowls can carry a metallic protection or being entirely metallic (without visualization of level). For a correct lubrication it is advisable to set the drip rate in order to have a drop of oil WAIRSOL class ISO15 every 300 - 500 NI/min. They are in compliance with ATEX directive, 2GD category, upon request.

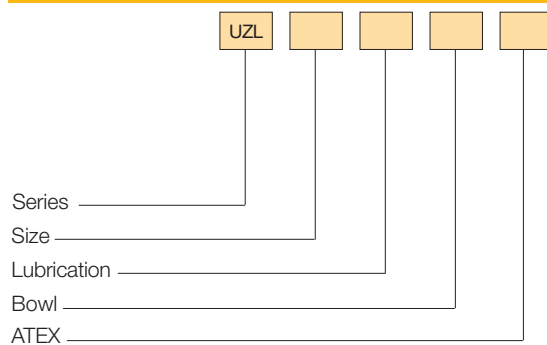
TECHNICAL DATA

Maximum pressure	16 bar
Working temperature	0 ÷ +50 °C (-10 °C with dry air)
Fluid	Filtered compressed air
Port size	G 1/4
Bowl capacity	20 cm ³ (do not exceed the level gauge)
Type of mounting	Modular, in-line and wall-mounting
Wall clamping screws	M4x50
Minimum striking flow rate	20 NI/min

DIMENSIONS AND WEIGHT - UZL



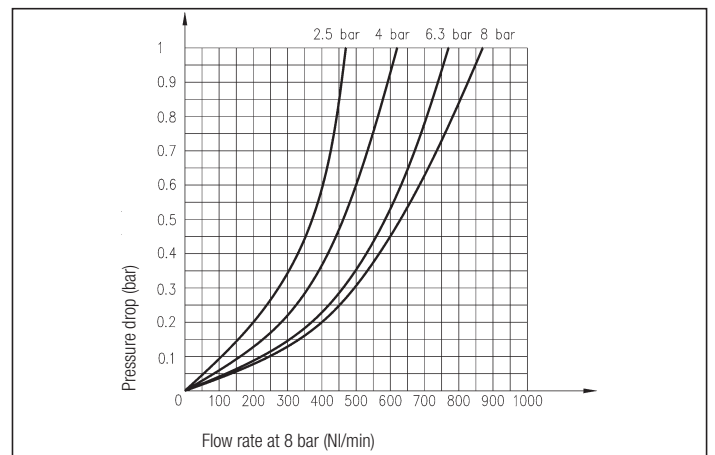
ORDER KEY



MATERIALS

Body	Aluminium alloy
Bowl	Transparent techno-polymer with metallic protection or entirely metallic bowl (without visualization of level) on request
Seals	NBR rubber
Conduits	Acetal resin

FLOW CHART - UZL



SIZE

4 G 1/4

LUBRICATION

Oil-mist **M** Micro oil-mist

BOWL

Transparent **PM** Metallic protection

TM Metallic

ATEX

/EX Consistent with the ATEX directive II 2GD c T5 T100°C -10°C ≤ Ta ≤ 50°C*

SPARE PARTS

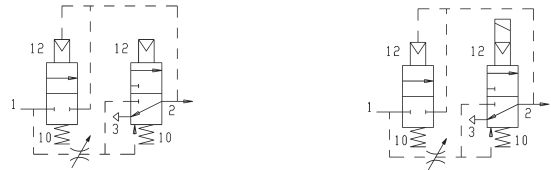
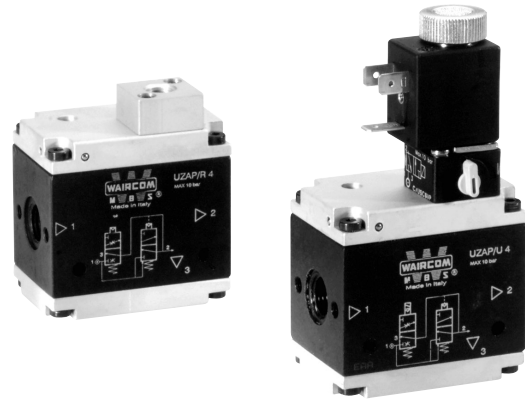
Metallic protection	UZ/PM
Metallic bowl	UZL/TM
Techno-polymer bowl	UZL/SG/3
Clear flow indicator	UZL/SG/4

DESCRIPTION

SOFT-START VALVE: soft-start valves series "UZAP" are produced with connections G 1/4 in the pneumatic and solenoid actuated versions. The working of the soft-start valve consists in feeding gradually air into the circuit with adjustable flow. When the pressure in the circuit reaches the 50 ÷ 60% of the upstream set pressure, the valve switches to full capacity, supplying the circuit with the maximum flow rate. They are in compliance with ATEX directive, 2GD category, upon request.

TECHNICAL DATA

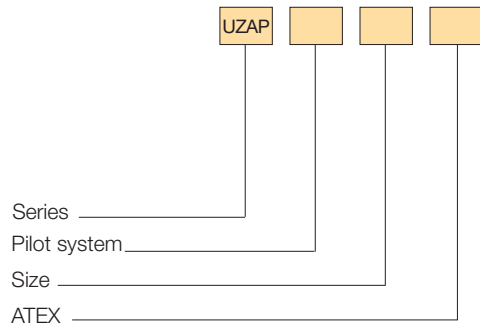
Maximum pressure	10 bar
Working temperature	0 ÷ +50 °C (-10 °C with dry air)
Fluid	Filtered, unlubricated or continuous lubricated compressed air
Port size	G 1/4
Piloting port size	G 1/8
Flow rate at 6 bar ΔP=1 bar	500 NI/min (750 NI/min for type UZAP/A4)
Max. flow rate of the adjusting screw of the filling time	300 NI/min
Type of mounting	Modular, in-line and wall-mounting
Wall clamping screws	M4x50
Piloting solenoid valve	C/USCVP - see chapter Direct acting solenoid valves on page 2.14
Coil	USB - see chapter Coils on page 2.17 USBG - see chapter Coils on page 2.17 USBG2 - see chapter Coils on page 2.17
Electric connector	USR 102/N9 - see chapter Connectors on page 2.18 ULR1B - see chapter Connectors on page 2.18



MATERIALS

Body	Anodized aluminium alloy
Springs	Stainless steel
Pistons	Anodized aluminium alloy
Seals	NBR rubber

ORDER KEY



PILOT SYSTEM

/R Pneumatic /U Solenoid

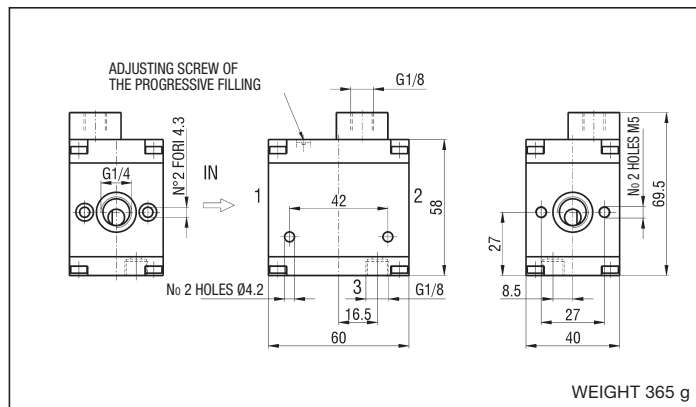
SIZE

4 G 1/4

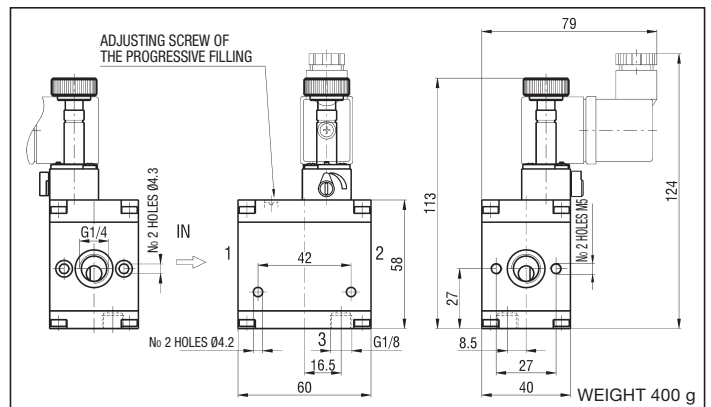
ATEX

/EX Consistent with the ATEX directive II 2GD c T5 T100°C -10°C ≤ Ta ≤ 50°C

DIMENSIONS AND WEIGHT - UZAP/R4



DIMENSIONS AND WEIGHT - UZAP/U4



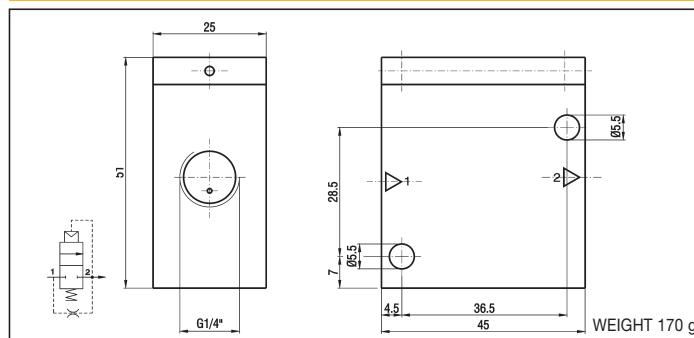
Air treatment: automatic soft-start valve UZAP/A4 G 1/4

series UZ

DESCRIPTION

AUTOMATIC SOFT-START VALVE: this valve, produced with connections G 1/4 in the 2/2 pneumatic version, even if cannot be modular assembled with the F-R-L of series "UZ", yet assures the same functionality of the soft-start valve before mentioned, and with the peculiarity of being "automatic", not needing any kind of external pilot. They are in compliance with ATEX directive, 2GD category, upon request.

DIMENSIONS AND WEIGHT - UZAP/A4



4

Air treatment: shut - off valve UZVL G 1/4

series UZ

DESCRIPTION

Shut - off valves series "UZVL" are produced with connections G 1/4 and they are fit to be locked in the exhaust position by means of a standard padlock. It is in compliance with ATEX directive, 2GD category, upon request.



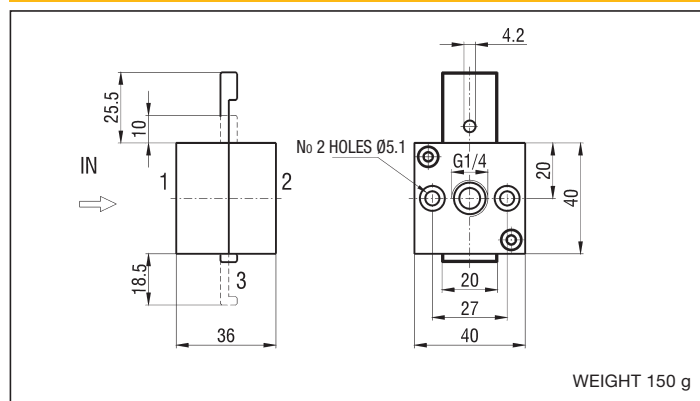
TECHNICAL DATA

Maximum pressure	16 bar
Working temperature	0 ÷ +50 °C (-10° C with dry air)
Fluid	Filtered, unlubricated or continuous lubricated compressed air
Port size	G 1/4
Flow rate at 6 bar ΔP=1 bar	1300 NI/min
Type of mounting	Modular and in-line

MATERIALS

Body	Anodized aluminium alloy
Seals	NBR rubber
Slider	Anodized aluminium alloy

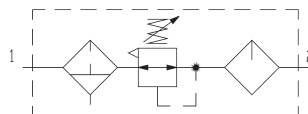
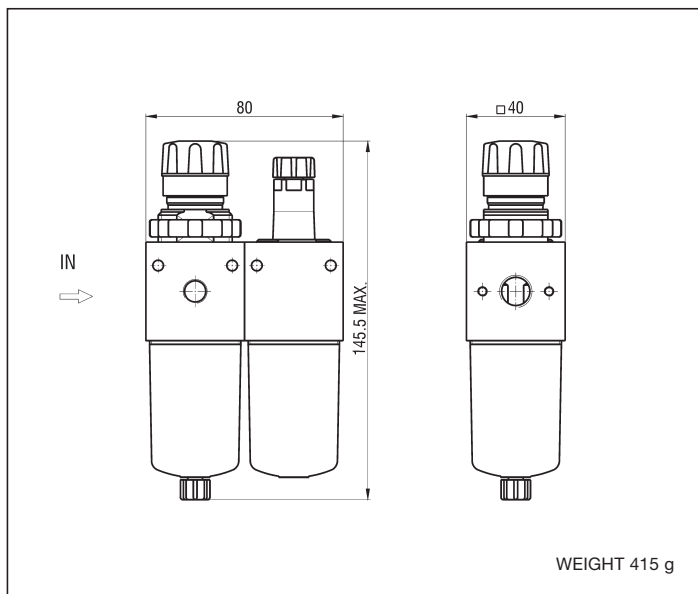
DIMENSIONS AND WEIGHT - UZVL/4



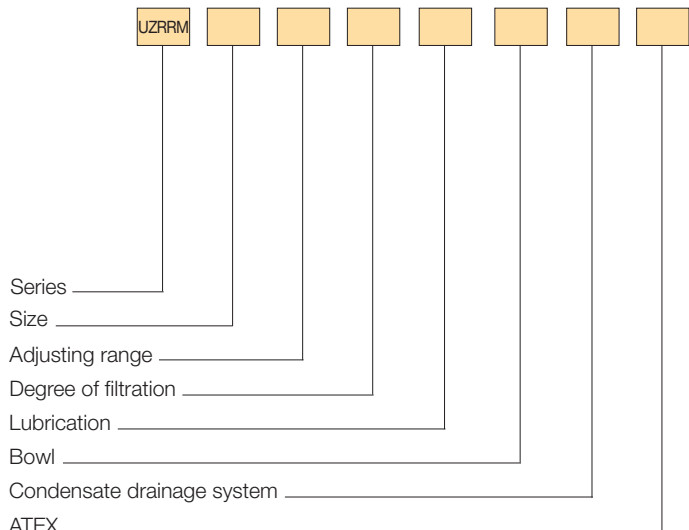
TECHNICAL DATA

Maximum pressure	16 bar
Working temperature	0 ÷ +50 °C (-10° C with dry air)
Fluid	Compressed air
Port size	G 1/4
Pressure gauge port size	G 1/8
Flow rate at 6 bar ΔP=1 bar	260 NI/min
Wall clamping screws	M4x50

DIMENSIONS AND WEIGHT - FR+L



ORDER KEY



SIZE	
4	G 1/4
DEGREE OF FILTRATION	
/3	0,2 ÷ 2 bar
/7	0,8 ÷ 9 bar
/5	0,4 ÷ 4 bar
/12	1,5 ÷ 12 bar
ADJUSTING RANGE	
F5	5 µm
F40	40 µm
F20	20 µm
LUBRICATION	
L	Oil mist (standard)
LM	Micro-oil mist
BOWL	
	Trasparent
/TM	Metallic
/PM	Metallic protection
CONDENSATE DRAINAGE SYSTEM	
	Manual
/SS	Semi-automatic
ATEX	
/EX Consistent with the ATEX directive II 2GD c T5 T100°C -10°C ≤ Ta ≤ 50°C*	

P.S.: Filters reducers + lubricators can be supplied without the relieving seal on request; the series becomes **UZRM**...

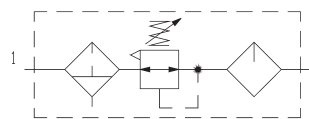
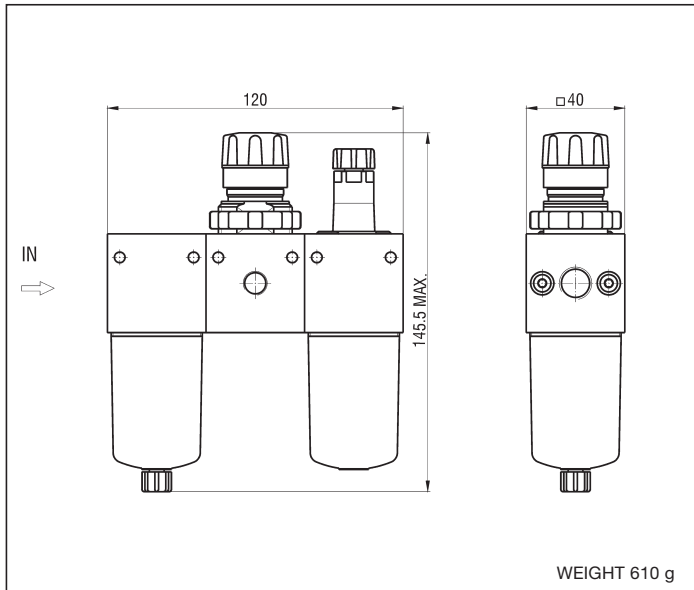
Air treatment: filter + reducer + lubricator G 1/4

series UZ

TECHNICAL DATA

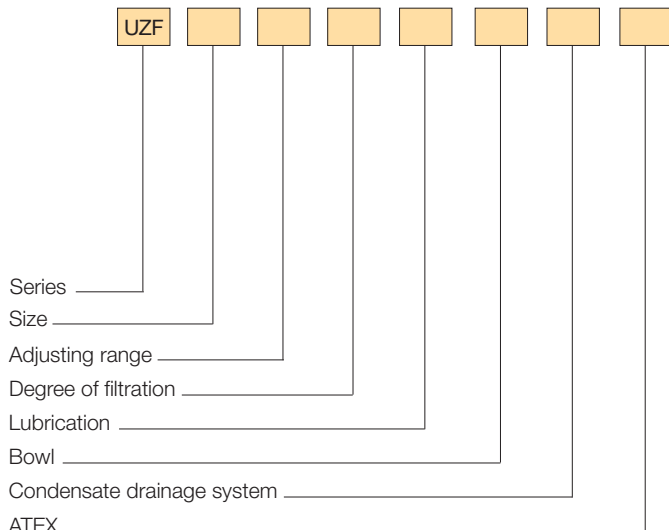
Maximum pressure	16 bar
Working temperature	0 ÷ +50 °C (-10° C with dry air)
Fluid	Compressed air
Port size	G 1/4
Pressure gauge port size	G 1/8
Flow rate at 6 bar ΔP=1 bar	220 NI/min
Wall clamping screws	M4x50

DIMENSIONS AND WEIGHT - F+R+L



4

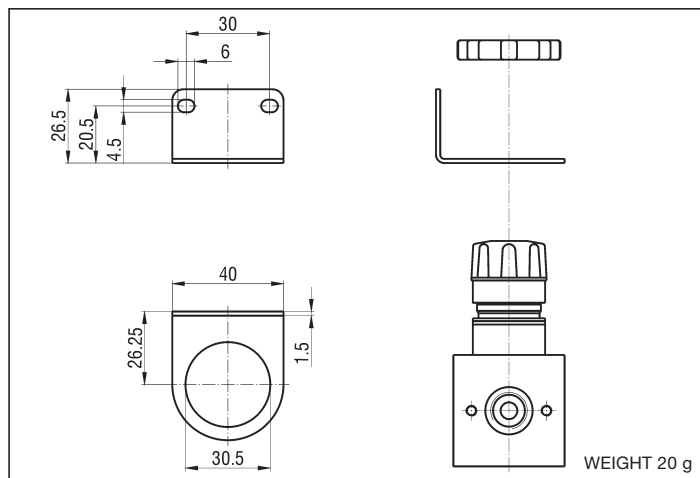
ORDER KEY



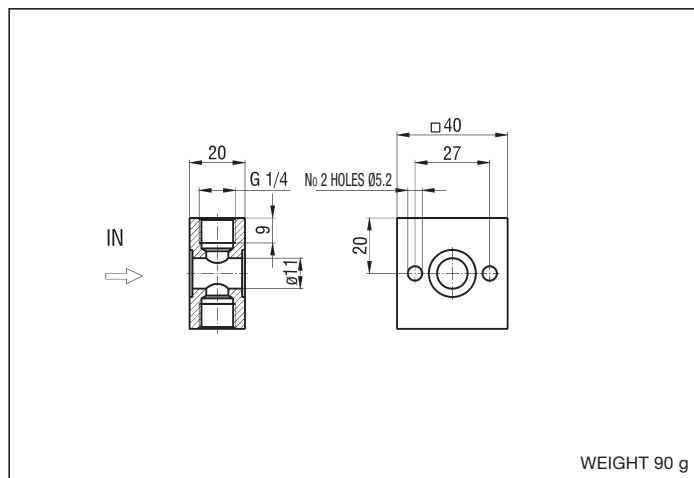
SIZE	
4	G 1/4
DEGREE OF FILTRATION	
/5	5 µm
/40	40 µm
/20	20 µm
ADJUSTING RANGE	
RR3	0,2 ÷ 2 bar
RR7	0,8 ÷ 9 bar
RR5	0,4 ÷ 4 bar
RR12	1,5 ÷ 12 bar
LUBRICATION	
L	Oil mist (standard)
LM	Micro-oil mist
BOWL	
	Trasparent
/TM	Metallic
/PM	Metallic protection
CONDENSATE DRAINAGE SYSTEM	
	Manual
/SS	Semi-automatic
ATEX	
/EX Consistent with the ATEX directive II 2GD c T5 T100°C -10°C ≤ Ta ≤ 50°C*	

P.S.: Filters + reducers + lubricators can be supplied without the relieving seal on request; the adjusting range becomes "R" (rather than "RR")

MOUNTING BRACKET UZRHS



INTERMEDIATE AIR INTAKE UZPR4 (screws included)



4

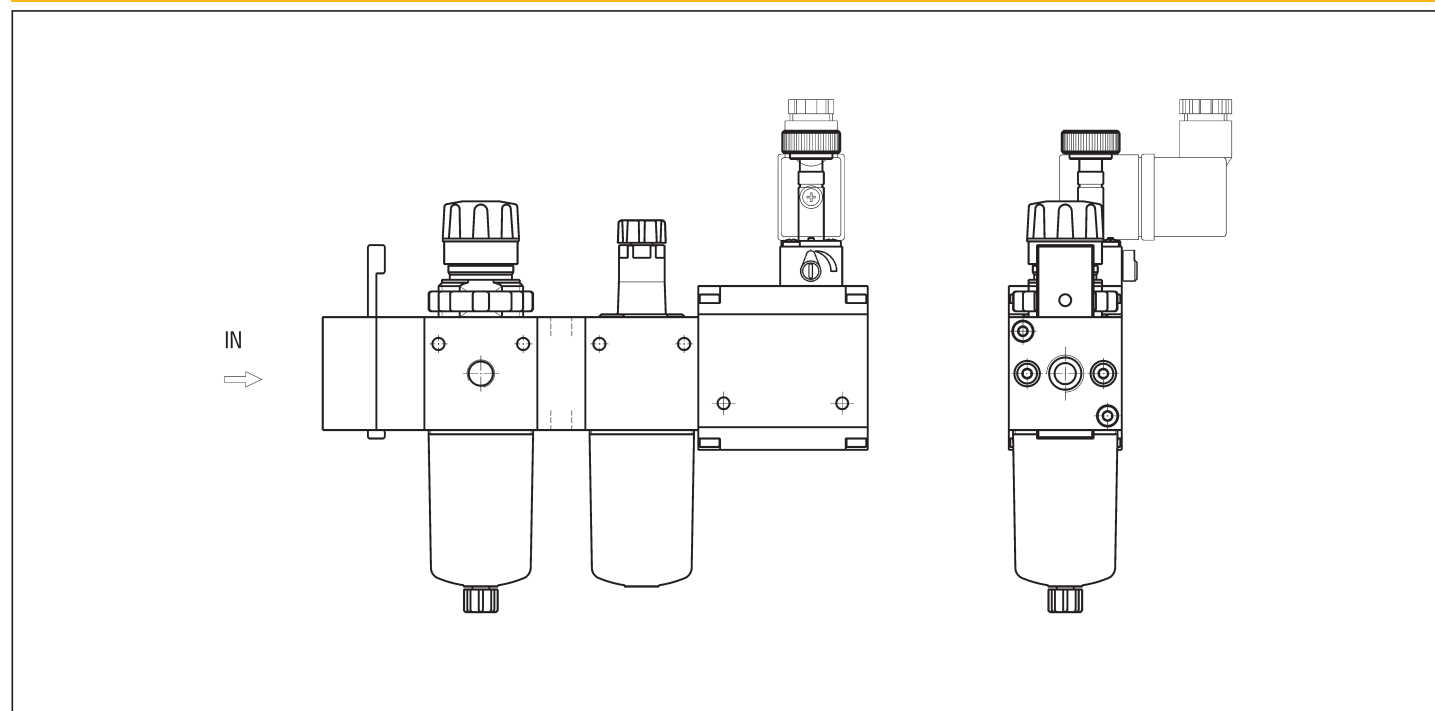
ASSEMBLY SCREWS

Assembly screws F+R+L	UZ/SVG
Assembly screws FR+L	UZ/SVG/1
Assembly screws F+L	UZ/SVG/2
Assembly screws FR+L+AP - R+L+AP	UZAP/SVG
Assembly screws FR+AP - R+AP	UZAP/SVG/1
Assembly screws VL+F+R	UZVL/SVG
Assembly screws VL+FR - VL+R	UZVL/SVG/1

WALL CLAMPING SCREWS

Clamping screws F-FR-R-L-AP	UZ/SVG/P
-----------------------------	----------

SHUT-OFF VALVE + FILTER + REDUCER + INTERMEDIATE AIR INTAKE + LUBRICATOR + SOFT-START VALVE



DESCRIPTION

Precision pressure reducers series "RRP" with constant leak (max. 10 l/min) are suitable for application as: process industry, laboratory, checking of balanced mechanisms, elements to tension etc. P.S.: Being high sensitivity components, we suggest the application of a filter with a degree of filtration of 5 µm upstream the precision pressure reducer, while they are not recommended for use in closed circuit (contact our technical office).

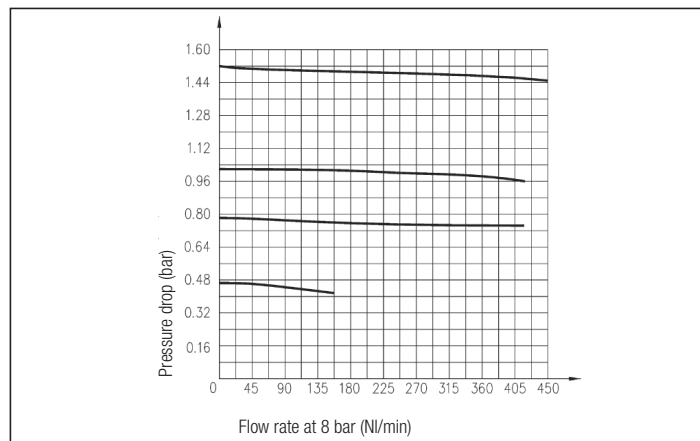
TECHNICAL DATA

Maximum pressure	10 bar
Working temperature	0 ÷ +50°C (-10°C with dry air)
Fluid	Filtered, lubricated and unlubricated compressed air
Port size	G 1/4
Pressure gauge port size	G 1/8
Adjusting range (bar)	0,02 ÷ 0,8; 0,1 ÷ 4; 0,5 ÷ 8
Reproducibility	< 0,3% full-scale
Sensibility	< 0,7% full-scale
Type of mounting	In-line, wall and panel mounting

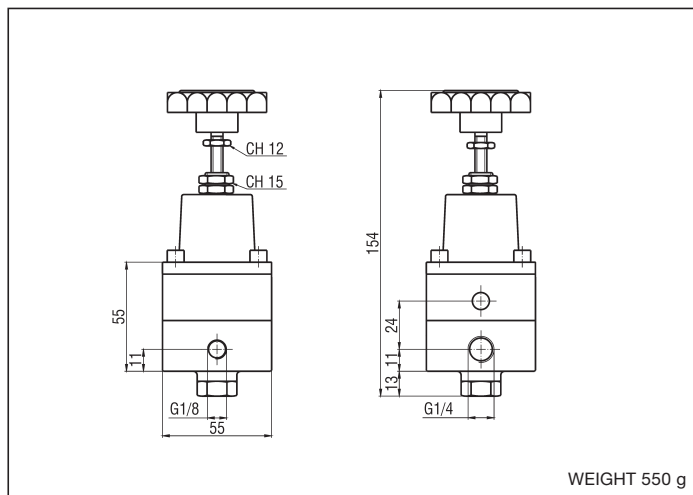
MATERIALS

Body	Aluminium alloy
Closing plug	Brass, NBR rubber
Spring	Stainless steel
Knob	Acetal resin
Adjusting screw	Brass
Diaphragm	Brass, NBR rubber

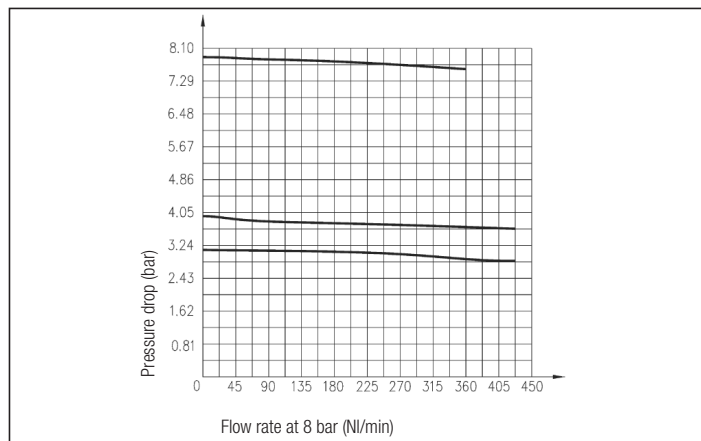
FLOW CHART - RRP 4/1



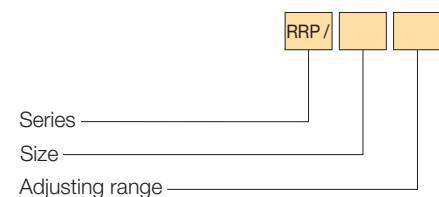
DIMENSIONS AND WEIGHT RRP



FLOW CHART - RRP4/5-RRP4/7



ORDER KEY



SIZE

4 G 1/4

ADJUSTING RANGE

/1 0,02 ÷ 0,8

/5 0,1 ÷ 4

/7 0,5 ÷ 8

SPARE PARTS

Relieving kit adjustment

RRP/SG/6

DESCRIPTION

Filters series "EZF" are produced with connections G 3/8, G 1/2 and G 1; they are available with various degrees of filtration and with manual, semi-automatic or automatic condensate drainage system (except the size G 3/8). The techno-polymer bowls have a metallic protection as standard for the sizes G 1/2 and G 1, and made of glass stiffened polyamide on request for the size G 3/8. They are in compliance with ATEX directive, 2GD category, upon request.

TECHNICAL DATA

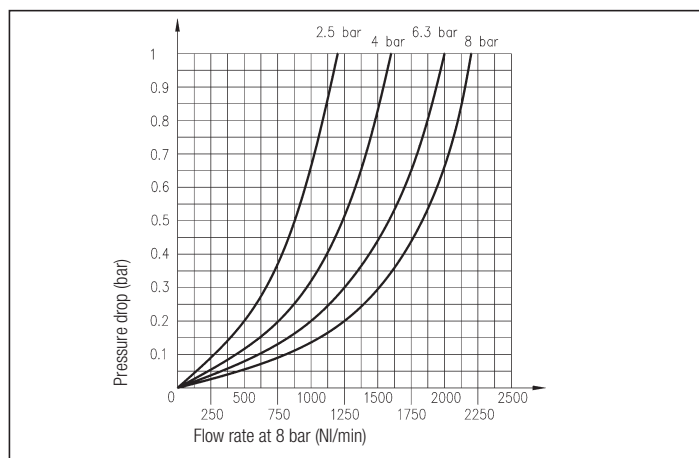
Maximum pressure	16 bar
Working temperature	0 ÷ +50 °C (-10° C with dry air)
Fluid	Compressed air
Port size	G 3/8 - G 1/2 - G 1
Void fraction	G 3/8 - G 1/2: 20 µm standard; 5 µm or 40 µm on request G 1: 40 µm standard
Condensate drainage system	G 3/8: Manual or semi-automatic G 1/2 - G 1: Manual, semi-automatic or automatic
Max. condensate capacity	G 3/8 = 23 cm ³ G 1/2 = 58 cm ³ G 1 = 105 cm ³ (do not exceed the level gauge)
Type of mounting	Modular, in-line and wall-mounting
Wall clamping screws	G 3/8: M4x60 G 1/2: M5x70 G 1: M6x90



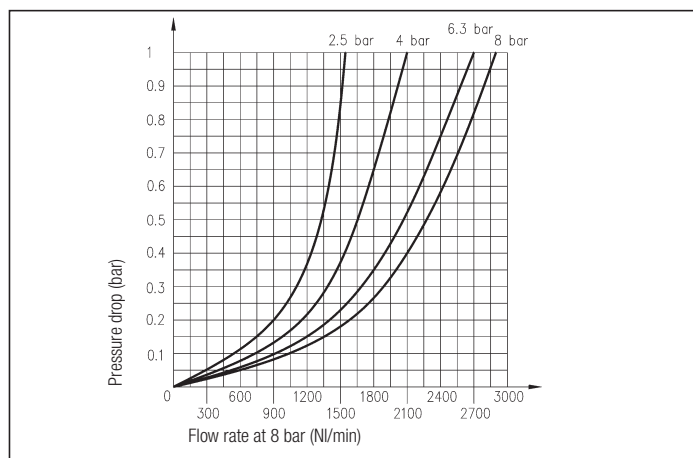
MATERIALS

Body	Aluminium alloy
Bowl	G 3/8: Transparent techno-polymer (protection made of glass stiffened polyamide on request) G 1/2 - G 1: Transparent techno-polymer with metallic protection as standard
Filtering element	G 3/8 - G 1/2: sintered polyethylene 5 µm - orange 20 µm - white 40 µm - grey G 1: Sintered porous bronze
Seals	NBR rubber
Baffle	Acetal resin

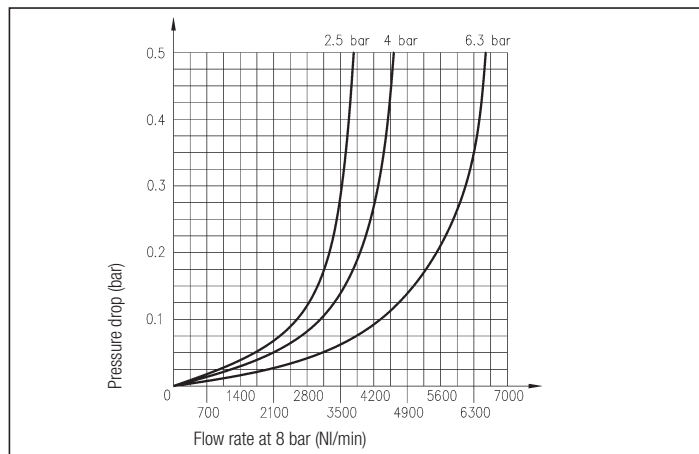
FLOW CHART - EZF G 3/8



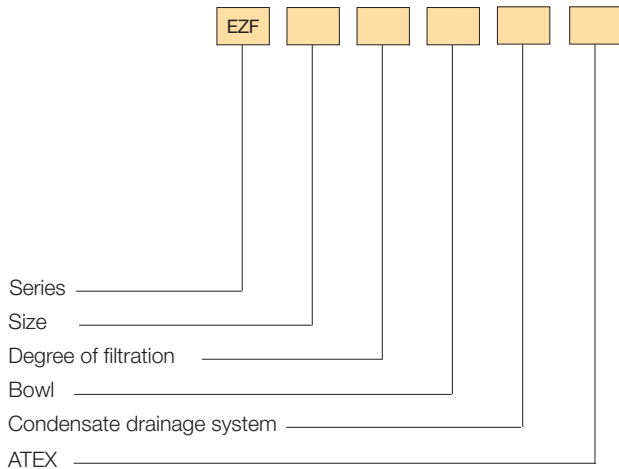
FLOW CHART - EZF G 1/2



FLOW CHART - EZF G 1



ORDER KEY



SIZE			
3	G 3/8	2	G 1/2
1	G 1		
DEGREE OF FILTRATION			
/5	5 µm*	/20	20 µm
/40	40 µm		
BOWL			
Trasparent		PM	Protection**
CONDENSATE DRAINAGE SYSTEM			
/SM	Manual	/SS	Semi-automatic
/SA	Automatic***		
ATEX			
/EX Consistent with the ATEX directive II 2GD c T5 T100°C -10°C≤Ta≤50°C			

* Available only for sizes 3 and 2

** Metallic as standard for sizes 2 and 1, made of glass stiffened polyamide on request for size 3

*** Available only for sizes 2 and 1

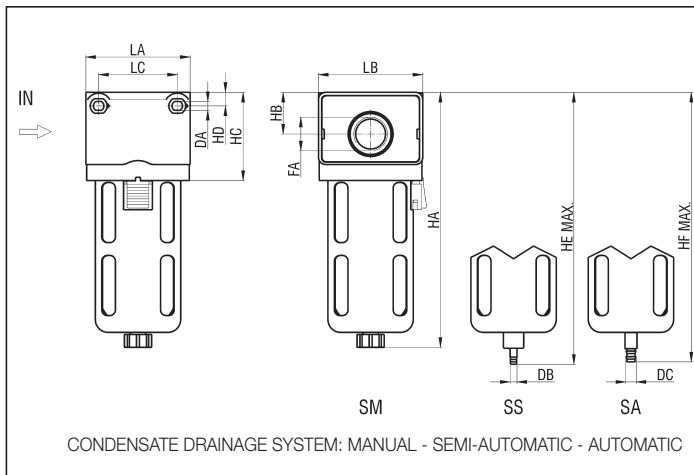
4

SPARE PARTS

DESCRIPTION	SIZE		
	3	2	1
Bowl protection	EZ3/PM	-	EZ1/PM
Techno-polymer bowl with manual drainage system*	EZT/F3/SM	EZT/F2/PM/SM	EZT/F1/SM
Techno-polymer bowl with semi-automatic drainage system*	EZT/F3/SS	EZT/F2/PM/SS	EZT/F1/SS
Techno-polymer bowl with automatic drainage system*	-	EZT/F2/PM/SA	EZT/F1/SA
Filter cartridge 5 µm	EZ3/5	EZ2/5	-
Filter cartridge 20 µm	EZ3/20	EZ2/20	EZ1/20
Filter cartridge 40 µm	EZ3/40	EZ2/40	EZ1/40

* The bowls size 2 are supplied with metallic protection as standard

DIMENSIONS AND WEIGHTS - EZF



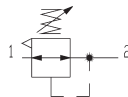
SIZE	DA	DB	DC	FA	HA	HB	HC	HD	HE	HF	LA	LB	LC	WEIGHT (g)
3	4,5	G 1/8	-	G 3/8	142	21	52	6	146	-	55	50	40	390
2	5,5	Ø 4,3	Ø 6,5	G 1/2	159	26	55	8,5	170	168	65	65	49	415
1	6,6	G 1/8	Ø 6,5	G 1	218	31	76	9	222	213	85	82	60	1815

DESCRIPTION

Pressure reducers series "EZRR" are produced with connections G 3/8, G 1/2 and G 1; they are available with different scales of regulation and can be supplied without the relieving seal on request. They are in compliance with ATEX directive, 2GD category, upon request.

TECHNICAL DATA

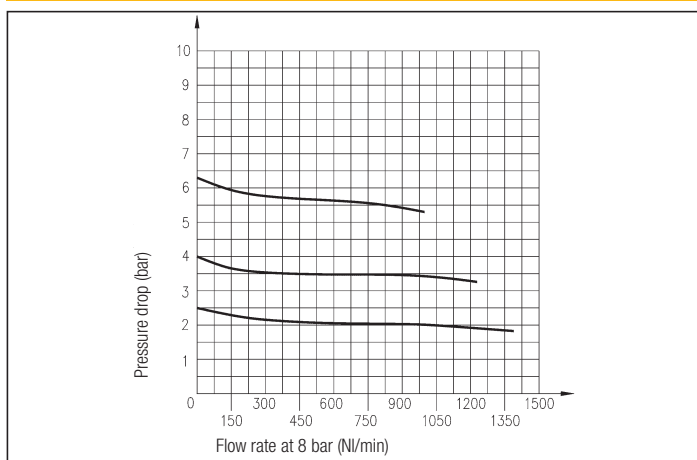
Maximum pressure	16 bar
Working temperature	0 ÷ +50 °C (-10° C with dry air)
Fluid	Filtered, lubricated and unlubricated compressed air
Port size	G 3/8 - G 1/2 - G 1
Pressure gauge port size	G 1/8
Adjusting range (bar)	0,2 ÷ 2 - 0,4 ÷ 4 - 0,8 ÷ 8
Type of mounting	Modular, in-line, wall and panel mounting
Wall clamping screws	G 3/8: M4x60 G 1/2: M5x70 G 1: M6x90



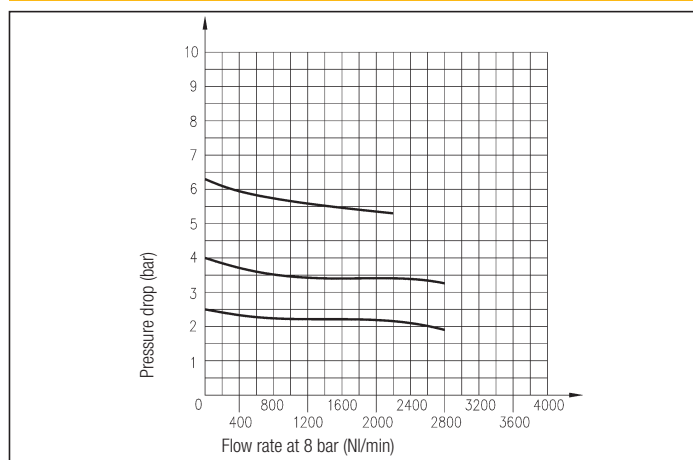
MATERIALS

Body	Aluminium alloy
Closing plug	Brass, NBR rubber
Spring	Stainless steel
Knob	Acetal resin
Adjusting screw	Brass
Diaphragm	Brass, friction

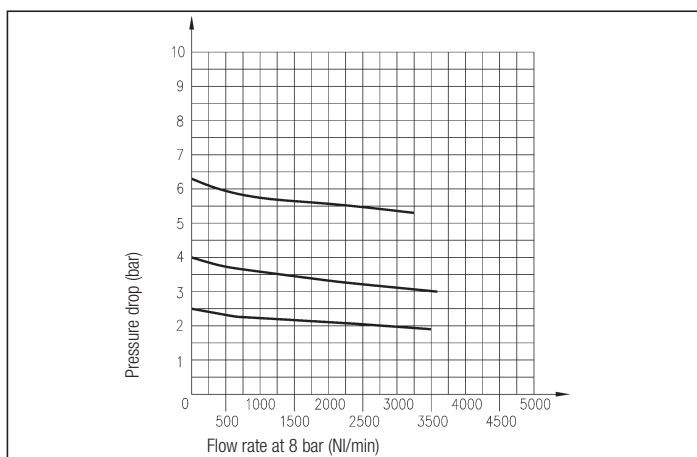
FLOW CHART - EZRR G 3/8



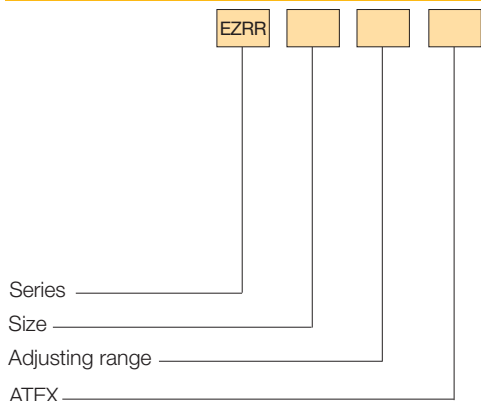
FLOW CHART - EZRR G 1/2



FLOW CHART - EZRR G 1



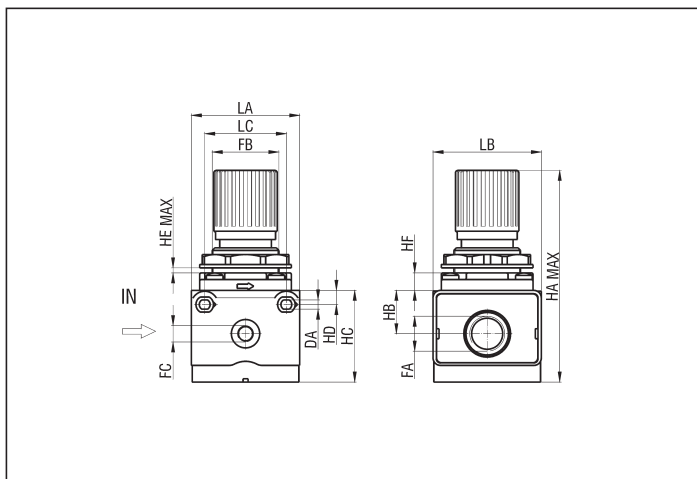
ORDER KEY



SIZE			
3	G 3/8	2	G 1/2
1	G 1		
ADJUSTING RANGE			
/3	0,2 ÷ 2 bar	/5	0,4 ÷ 4 bar
/7	0,8 ÷ 8 bar		
ATEX			
/EX Consistent with the ATEX directive II 2GD c T5 T100°C -10°C ≤ Ta ≤ 50°C			

P.S.: Reducers can be supplied without the relieving seal on request; the series becomes **EZR...**

DIMENSIONS AND WEIGHTS - EZRR



SPARE PARTS

Relieving kit adjustment size 3	EZRR3/SG/6
Relieving kit adjustment size 2	EZRR2/SG/6
Relieving kit adjustment size 1	EZRR1/SG/6

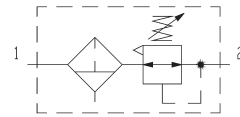
SIZE	DA	FA	FB	FC	HA	HB	HC	HD	HE	HF	LA	LB	LC	WEIGHT (g)
3	4,5	G 3/8	M30x1,5	G 1/8	99	21	48	6	4	6	55	50	40	450
2	5,5	G 1/2	M40x1,5	G 1/8	127	26	55	8,5	7	10,5	65	65	49	465
1	6,6	G 1	-	G 1/8	194,5	31	76	9	-	14	85	82	60	2385

DESCRIPTION

Filters reducers series "EZRR/F", produced with connections G 3/8, G 1/2 and G 1, combine the characteristics of the filters and of the pressure reducers series "EZ", thus optimizing the overall dimensions. They are in compliance with ATEX directive, 2GD category, upon request.

TECHNICAL DATA

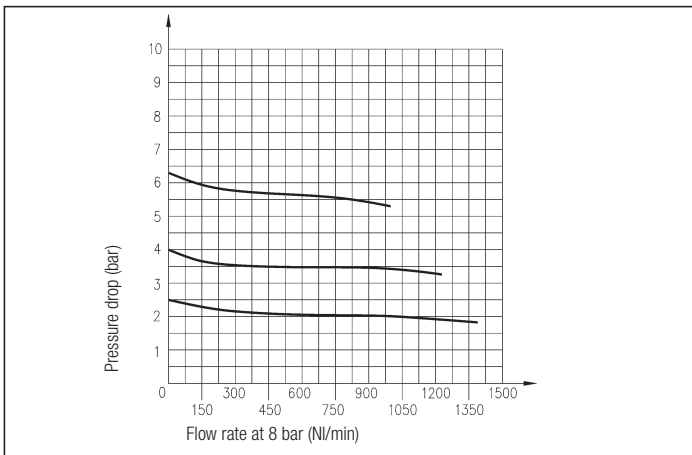
Maximum pressure	16 bar
Working temperature	0 ÷ +50 °C (-10 °C with dry air)
Fluid	Compressed air
Port size	G 3/8 - G 1/2 - G 1
Pressure gauge port size	G 1/8
Void fraction	G 3/8 - G 1/2: 20 µm standard, 5 µm and 40 µm on request G 1: 40 µm standard
Condensate drainage system	G 3/8: manual or semi-automatic G 1/2 - G 1: manual, semi-automatic or automatic
Max. condensate capacity	G 3/8 = 23 cm ³ G 1/2 = 58 cm ³ G 1 = 105 cm ³ (do not exceed the level gauge)
Adjusting range (bar)	0,2 ÷ 2 - 0,4 ÷ 4 - 0,8 ÷ 8
Type of mounting	Modular, in-line, wall and panel mounting
Wall clamping screws	G 3/8: M4x60 G 1/2: M5x70 G 1: M6x90



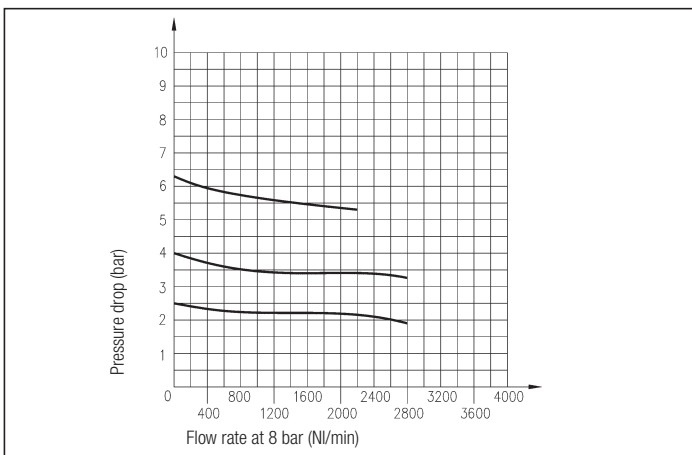
MATERIALS

Body	Aluminium alloy
Bowl	G 3/8: Transparent techno-polymer (protection made of glass stiffened polyamide on request) G 1/2 - G 1: Transparent techno-polymer with metallic protection as standard
Filtering element	G 3/8 - G 1/2: sintered polyethylene 5 µm - orange 20 µm - white 40 µm - grey G 1: sintered porous bronze
Seals	NBR rubber
Baffle	Acetal resin
Closing plug	Brass, NBR rubber
Spring	Stainless steel
Knob	Acetal resin
Adjusting screw	Brass
Diaphragm	Brass, friction

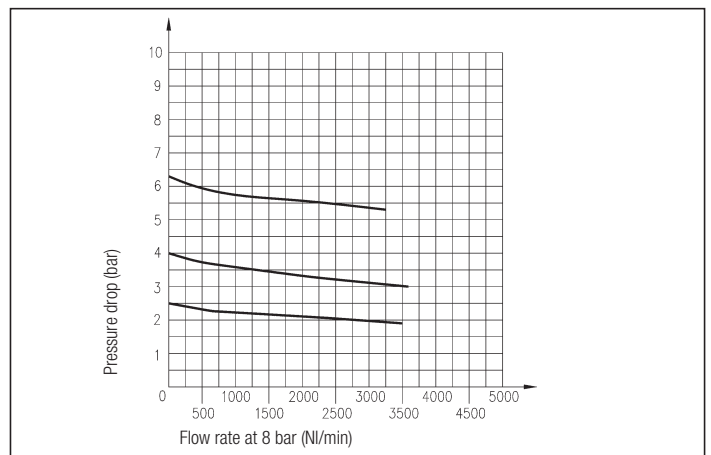
FLOW CHART - EZRR /F G 3/8



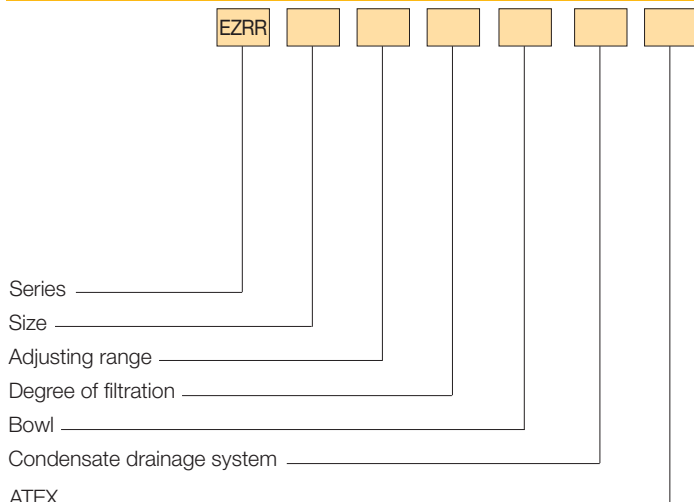
FLOW CHART - EZRR /F G 1/2



FLOW CHART - EZRR /F G 1



ORDER KEY



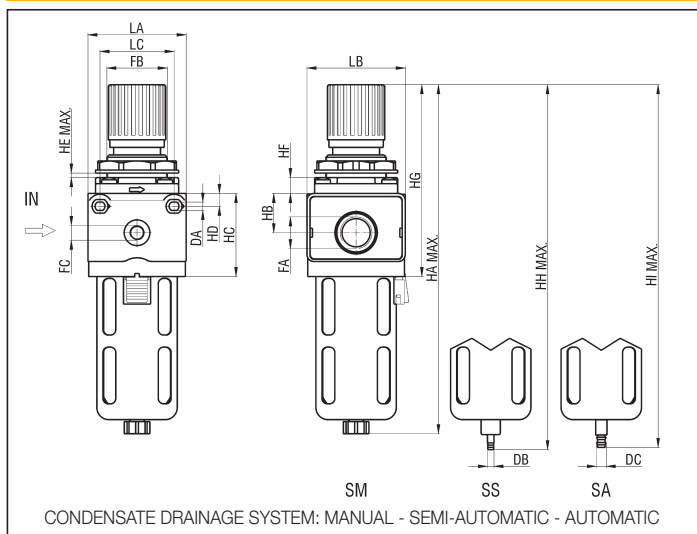
SIZE			
3	G 3/8	2	G 1/2
1	G 1		
ADJUSTING RANGE			
/3	0,2 ÷ 2 bar	/5	0,4 ÷ 4 bar
/7	0,8 ÷ 8 bar		
DEGREE OF FILTRATION			
F5	5 µm*	F20	20 µm
F40	40 µm		
BOWL			
	Trasparent	PM	Protection**
CONDENSATE DRAINAGE SYSTEM			
/SM	Manual	/SS	Semi-automatic
/SA	Automatic***		
ATEX			
/EX Consistent with the ATEX directive II 2GD c T5 T100°C -10°C≤Ta≤50°C			

4

SPARE PARTS

See series **EZF** (on page 4.13) and **EZRR** (on page 4.15)

DIMENSIONS AND WEIGHTS - EZRR /F



SIZE	DA	DB	DC	FA	FB	FC	HA	HB	HC	HD
3	4,5	G 1/8	-	G 3/8	M30x1,5	G 1/8	193	21	52	6
2	5,5	Ø 4,3	Ø 6,5	G 1/2	M40x1,5	G 1/8	231	26	55	8,5
1	6,6	G 1/8	Ø 6,5	G 1	-	G 1/8	337	31	76	9

SIZE	HE	HF	HG	HH	HI	LA	LB	LC	WEIGHT (g)
3	4	6	99	197	-	55	50	40	550
2	7	10,5	127	242	240	65	65	42	610
1	-	14	194,5	341	332	85	82	60	2790

DESCRIPTION

Lubricators series "EZL" are produced with connections G 3/8, G 1/2 and G 1; the techno-polymer bowls have a metallic protection as standard for the sizes G 1/2 and G 1, and made of glass stiffened polyamide on request for the size G 3/8.

For a correct lubrication it is advisable to set the drip rate in order to have a drop WAIRSOL class ISO15 every 300 - 500 NI/min. (oil mist lubrication). They are in compliance with ATEX directive, 2GD category, upon request.

TECHNICAL DATA

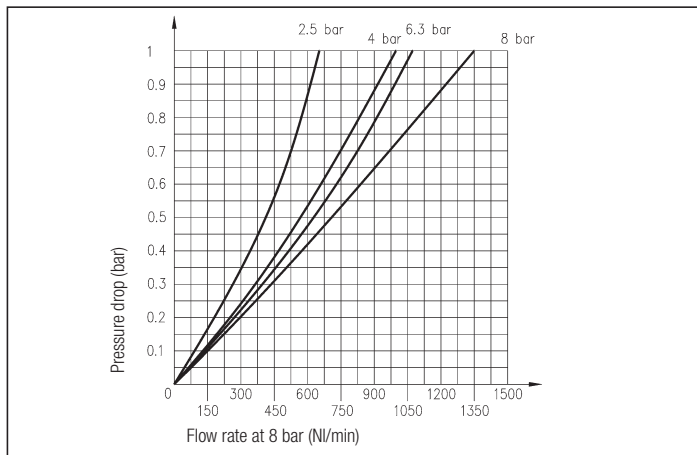
Maximum pressure	16 bar
Working temperature	0 ÷ +50 °C (-10 °C with dry air)
Fluid	Filtered compressed air
Port size	G 3/8 - G 1/2 - G 1
Bowl capacity	G 3/8 = 32 cm ³ G 1/2 = 76 cm ³ G 1 = 160 cm ³ (do not exceed the level gauge)
Type of mounting	Modular, in-line and wall-mounting
Wall clamping screws	G 3/8: M4x60 G 1/2: M5x70 G 1: M6x90
Minimum striking flow rate	G 3/8 = 25 NI/min G 1/2 = 25 NI/min G 1 = 50 NI/min



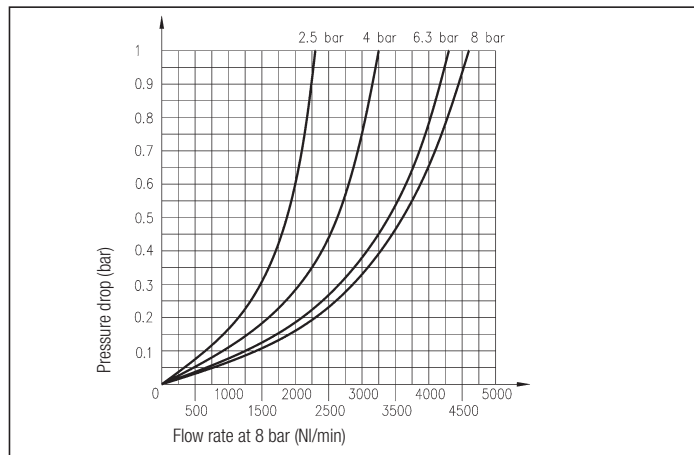
MATERIALS

Body	Aluminium alloy
Bowl	G 3/8: Transparent techno-polymer (protection made of glass stiffened polyamide on request) G 1/2 - G 1: Transparent techno-polymer with metallic protection as standard
Seals	NBR rubber
Conduits	Acetal resin

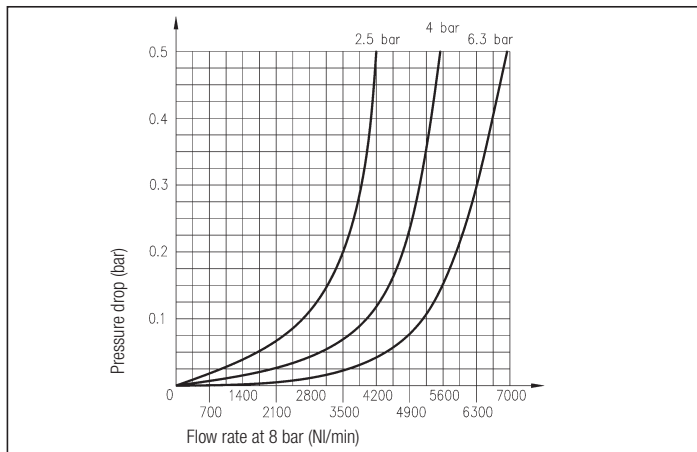
FLOW CHART - EZL G 3/8



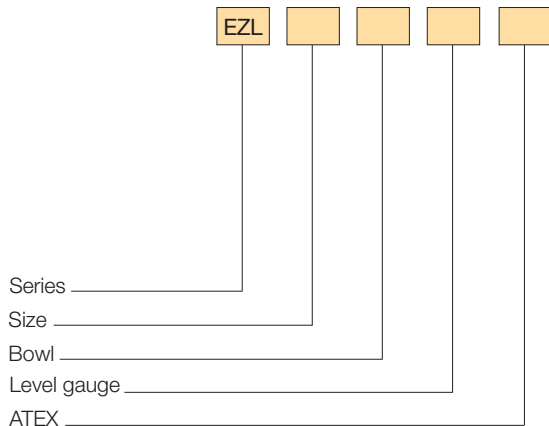
FLOW CHART - EZL G 1/2



FLOW CHART - EZL G 1



ORDER KEY

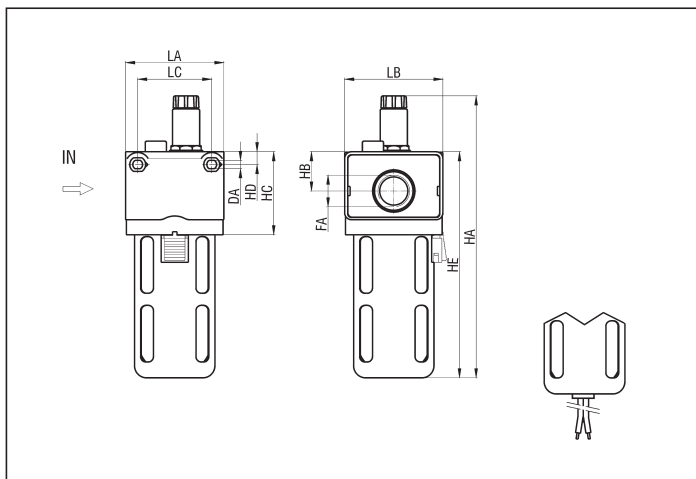


SIZE			
3	G 3/8	2	G 1/2
1	G 1		
BOWL			
Trasparent		PM	Protection*
LEVEL GAUGE			
Open electric			
/CA Open electric contact when oil is present with 2 wires cable 0,5 m length			
/CC Closed electric contact when oil is present with 2 wires cable 0,5 m length			
ATEX			
/EX Consistent with the ATEX directive Ex II 2GD c T5 T100°C -10°C ≤ Ta ≤ 50°C			

* Metallic as standard for sizes 2 and 1, made of glass stiffened polyamide on request for size 3
P.S.: Level gauge, in both the open and closed electric contact, is fed with a voltage range from 6 V to 50 V

4

DIMENSIONS AND WEIGHTS - EZL



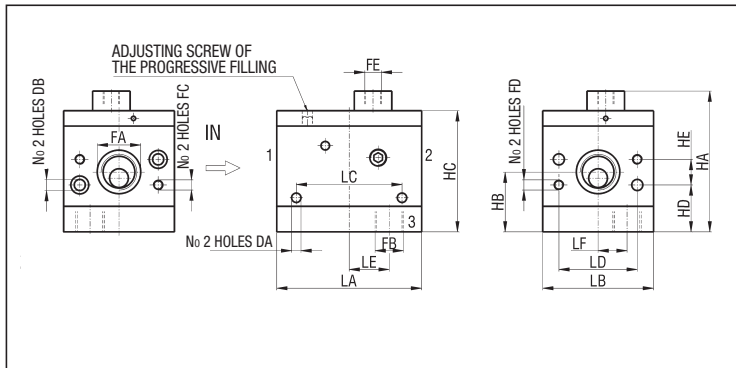
SPARE PARTS

Lubricator bowl size 3	EZT/L3
Lubricator bowl size 2*	EZT/L2/PM
Lubricator bowl size 1	EZT/L1
Lubricator bowl for level gauge size 3	EZT/L3/SLC
Lubricator bowl for level gauge size 2*	EZT/L2/PM/SLC
Lubricator bowl for level gauge size 1	EZT/L1/SLC
Protection made of glass stiffened nylon size 3	EZ3/PM
Metallic protection size 1	EZ1/PM
Lubricator clear cover size 3	EZL3/C
Lubricator clear cover size 2	EZL2/C
Lubricator clear cover size 1	EZL1/C
Level gauge with open electric contact size 3	EZT/L3/SLA
Level gauge with open electric contact size 2*	EZT/L2/PM/SLA
Level gauge with open electric contact size 1	EZT/L1/SLA

* The bowls size 2 are supplied with metallic protection as standard

SIZE	DA	FA	HA	HB	HC	HD	HE	LA	LB	LC	WEIGHT (g)
3	4,5	G 3/8	157,5	21	52	6	121	55	50	40	370
2	5,5	G 1/2	186,7	26	55	8,5	149,7	65	65	49	400
1	6,6	G 1	243,5	31	76	9	201	85	82	60	1780

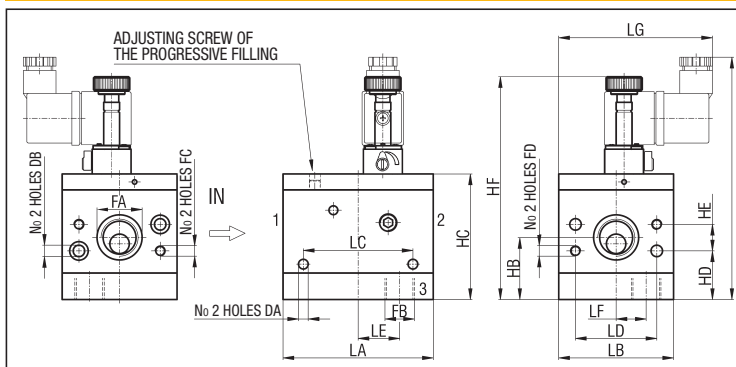
DIMENSIONS AND WEIGHTS - EZAP /R



SIZE	DA	DB	FA	FB	FC	FD	FE	HA	HB	HC
3	4,5	5,1	G 3/8	G 1/8	-	M6	G 1/8	68	28,8	56,5
2	5,5	6,5	G 1/2	G 3/8	M6	M6	G 1/8	82,5	35	71

SIZE	HD	HE	LA	LB	LC	LD	LE	LF	WEIGHT (g)
3	28,8	-	70	50	51,5	35	20	12	505
2	27,5	15	85	65	62	46	23,5	17	985

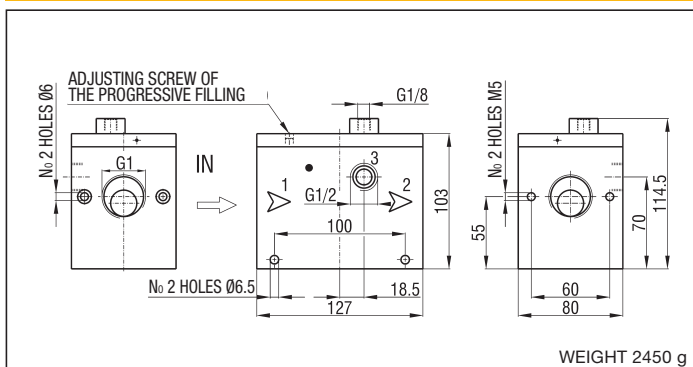
DIMENSIONS AND WEIGHTS - EZAP /U



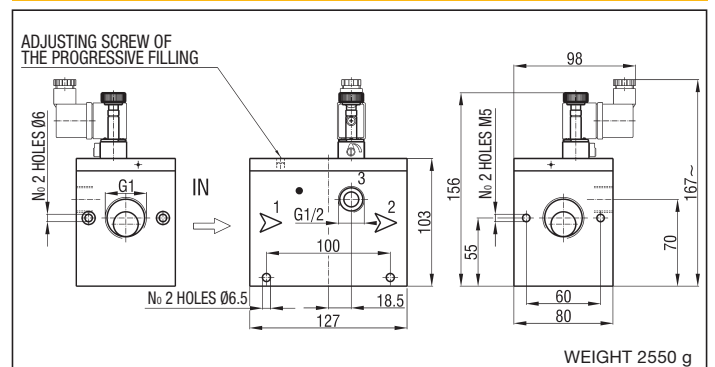
SIZE	DA	DB	FA	FB	FC	FD	HA	HB	HC	HD
3	4,5	5,1	G 3/8	G 1/8	-	M6	122,5	28,8	56,5	28,8
2	5,5	6,5	G 1/2	G 3/8	M6	M6	137	35	71	27,5

SIZE	HE	HF	LA	LB	LC	LD	LE	LF	LG	WEIGHT (g)
3	-	115,5	70	50	51,5	35	20	12	79,5	540
2	15	126	85	65	62	46	23,5	17	87	1020

DIMENSIONS AND WEIGHT - EZAP/R1



DIMENSIONS AND WEIGHT - EZAP/U1



DESCRIPTION

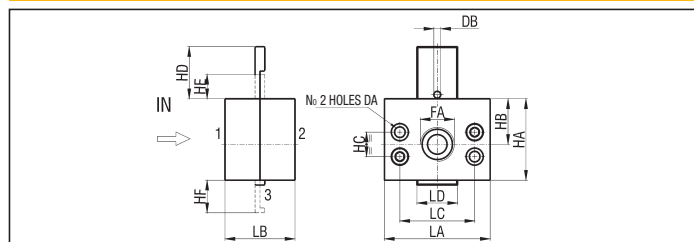
Shut - off valves series "EZVL" are produced with connections G 3/8, G 1/2 and G 1 and they are fit to be locked in the exhaust position by means of a standard padlock. They are in compliance with ATEX directive, 2GD category, upon request.



TECHNICAL DATA

Maximum pressure	16 bar
Working temperature	0 ÷ +50 °C (-10 °C with dry air)
Fluid	Filtered, lubricated and unlubricated compressed air
Flow rate at 6 bar ΔP=1 bar	G 3/8 = 2400 NI/min G 1/2 = 3150 NI/min G 1 = 4250 NI/min
Port size	G 3/8 - G 1/2 - G 1
Type of mounting	Modular and in-line

DIMENSIONS AND WEIGHTS - EZVL



MATERIALS

Body	Anodized aluminium alloy
Seals	NBR rubber
Slider	Anodized aluminium alloy

TYPE	DA	DB	FA	HA	HB	HC	HD	HE	HF	LA	LB	LC	LD	WEIGHT (g)
EZVL/3	5,5	4,2	G 3/8	50	25	-	36	15	21	50	39	35	25	260
EZVL/2	6,5	4,2	G 1/2	50	28	15	32	15	20	65	43	46	25	370
EZVL/1	6,1	4,2	G 1	60	30	-	34	15	22	80	60	60	25	700

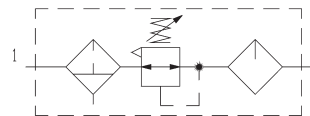
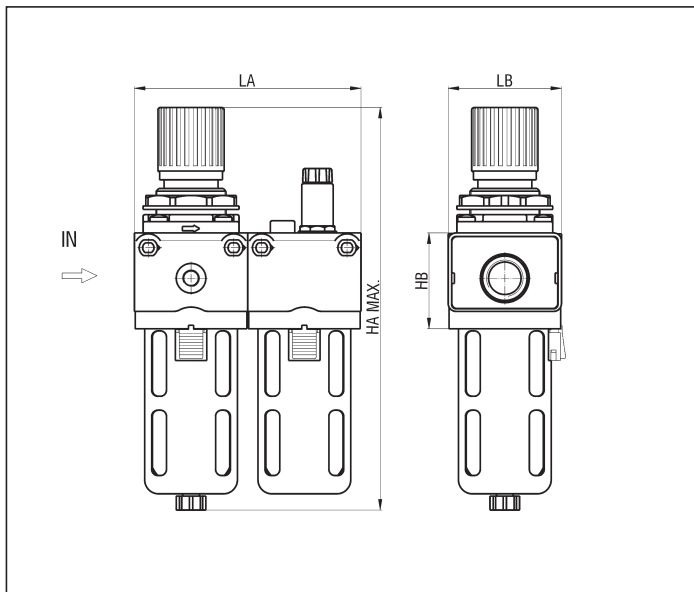
Air treatment: filter reducer + lubricator G 3/8 - G 1/2 - G 1

series EZ

TECHNICAL DATA

Maximum pressure	16 bar
Working temperature	0 ÷ +50 °C (-10 °C with dry air)
Fluid	Compressed air
Port size	G 3/8 - G 1/2 - G 1
Pressure gauge port size	G 1/8
Flow rate at 6 bar ΔP=1 bar	G 3/8 = 680 NI/min G 1/2 = 1200 NI/min G 1 = 2300 NI/min
Wall clamping screws	G 3/8: M4x60 G 1/2: M5x70 G 1: M6x90

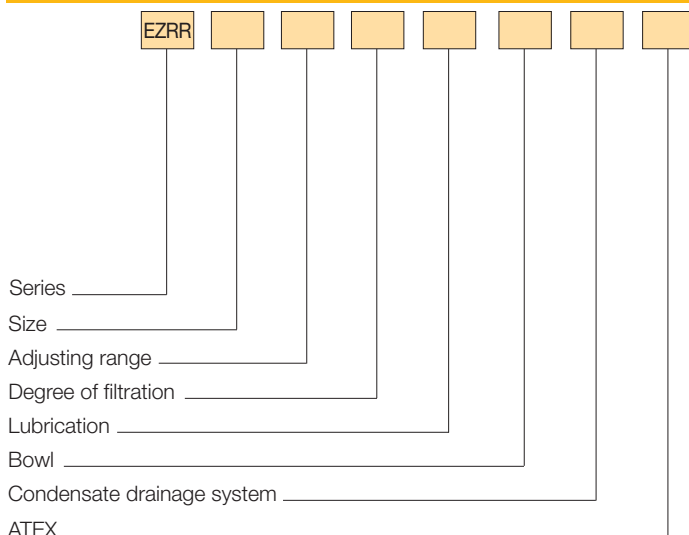
DIMENSIONS AND WEIGHTS - FR+L



SIZE	HA	HB	LA	LB	WEIGHT (g)
3	193	52	107	50	940
2	231	55	130	65	1065
1	337	76	167	82	4695

4

ORDER KEY



SIZE	
3 G 3/8	2 G 1/2
1 G 1	
ADJUSTING RANGE	
/3 0,2 ÷ 2 bar	/5 0,4 ÷ 4 bar
/7 0,8 ÷ 8 bar	
DEGREE OF FILTRATION	
F5 5 μm*	F20 20 μm
F40 40 μm	
LUBRICATION	
L Oil mist (standard)	LCA Oil mist, N.O. electric contact
LCC Oil mist, N.C. electric contact	
BOWL	
Trasparent	/PM Protection**
CONDENSATE DRAINAGE SYSTEM	
/SM Manual	/SS Semi-automatic
/SA Automatic***	
ATEX	
/EX Consistent with the ATEX directive II 2GD c T5 T100°C -10°C ≤ Ta ≤ 50°C	

* Available only for sizes 3 and 2

** Metallic as standard for sizes 2 and 1, made of glass stiffened polyamide on request for size 3

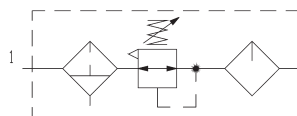
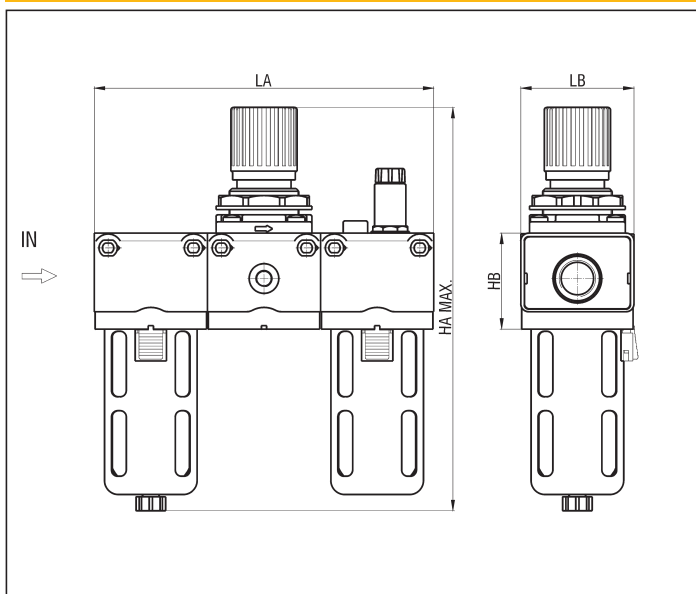
*** Available only for sizes 2 and 1

P.S.: Filters reducers + lubricators can be supplied without the relieving seal on request; the series becomes **EZR**...

TECHNICAL DATA

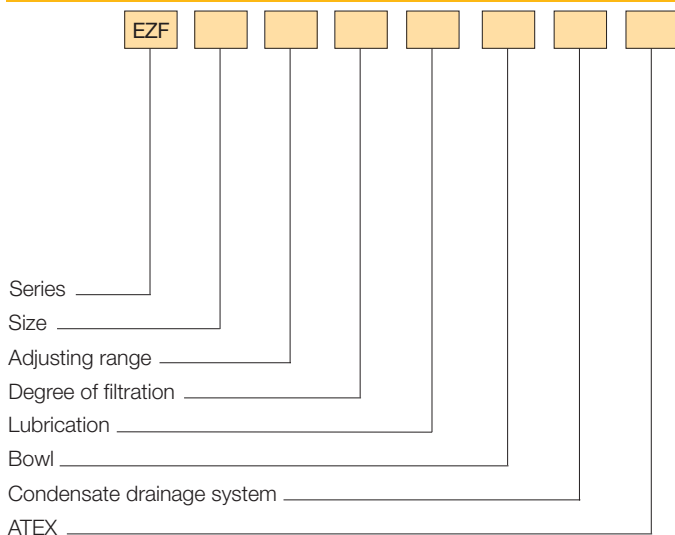
Maximum pressure	16 bar
Working temperature	0 ÷ +50 °C (-10 °C with dry air)
Fluid	Compressed air
Port size	G 3/8 - G 1/2 - G 1
Pressure gauge port size	G 1/8
Flow rate at 6 bar ΔP=1 bar	G 3/8 = 630 NI/min G 1/2 = 1100 NI/min G 1 = 2100 NI/min
Wall clamping screws	G 3/8: M4x60 G 1/2: M5x70 G 1: M6x90

DIMENSIONS AND WEIGHTS - F+R+L



SIZE	HA	HB	LA	LB	WEIGHT (g)
3	193	52	159	50	1260
2	231	55	195	65	1345
1	337	76	249	82	6080

ORDER KEY



SIZE	
3 G 3/8	2 G 1/2
1 G 1	
ADJUSTING RANGE	
RR3 0,2 ÷ 2 bar	RR5 0,4 ÷ 4 bar
RR7 0,8 ÷ 8 bar	
DEGREE OF FILTRATION	
/5 5 µm*	/20 20 µm
/40 40 µm	
LUBRICATION	
L Oil mist (standard)	LCA Oil mist, N.O. electric contact
LCC Oil mist, N.C. electric contact	
BOWL	
Trasparent	/PM Protection**
CONDENSATE DRAINAGE SYSTEM	
/SM Manual	/SS Semi-automatic
/SA Automatic***	
ATEX	
/EX Consistent with the ATEX directive II 2GD c T5 T100°C -10°C ≤ Ta ≤ 50°C	

* Available only for sizes 3 and 2

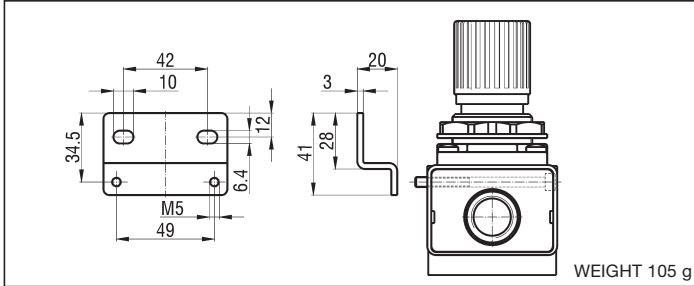
** Metallic as standard for sizes 2 and 1, made of glass stiffened polyamide on request for size 3

*** Available only for sizes 2 and 1

P.S.: Filters + reducers + lubricators can be supplied without the relieving seal on request; the adjusting range becomes "R" (rather than "RR")

MOUNTING BRACKET G 3/8 - UZRHS (see drawing on page 4.10)

MOUNTING BRACKET G 1/2 - EZS2/3



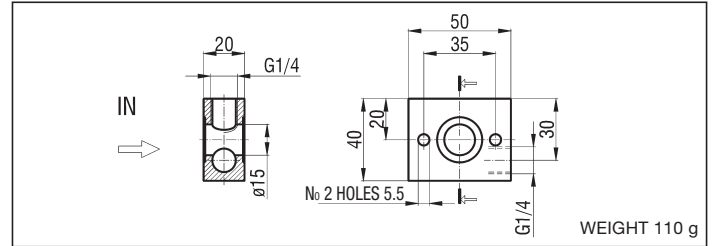
ASSEMBLY SCREWS

DESCRIPTION	SIZE		
	3	2	1
Assembly screws F+R+L	EZ3/SVG	EZ2/SVG	EZ1/SVG
Assembly screws FR+L	EZ3/SVG/1	EZ2/SVG/1	EZ1/SVG/1
Assembly screws F+L	EZ3/SVG/2		EZ1/SVG/2
Assembly screws FR+L+AP - R+L+AP	EZAP3/SVG	EZAP2/SVG	EZAP1/SVG
Assembly screws FR+AP - R+AP	EZAP3/SVG/1	EZAP2/SVG/1	EZAP1/SVG/1
Assembly screws VL+F+R	EZVL3/SVG	EZVL2/SVG	EZVL1/SVG
Assembly screws VL+FR - VL+R	EZVL3/SVG/1	EZVL2/SVG/1	EZVL1/SVG/1

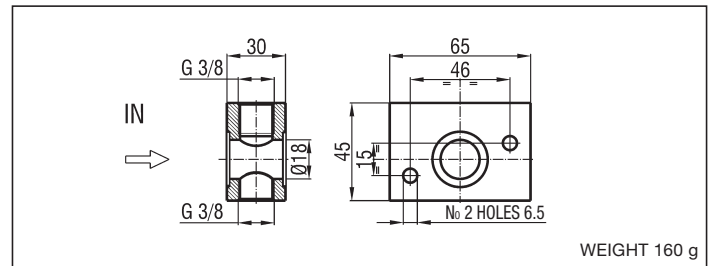
WALL CLAMPING SCREWS

DESCRIPTION	SIZE		
	3	2	1
Clamping screws F-FR-R-L-AP	EZ/SVG/P3	EZ/SVG/P2	EZ/SVG/P1

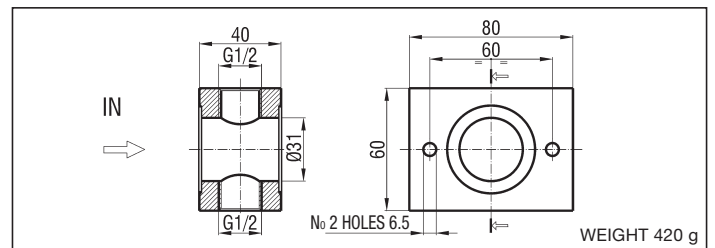
INTERMEDIATE AIR INTAKE G 3/8 - EZPA3/3 (screws included)



INTERMEDIATE AIR INTAKE G 1/2 - EZPA2/3 (screws included)



INTERMEDIATE AIR INTAKE G 1 - EZPA1/3 (screws included)



SHUT-OFF VALVE + FILTER + REDUCER + INTERMEDIATE AIR INTAKE + LUBRICATOR + SOFT-START VALVE

