

# Spool valves pilot and solenoid actuated G 1/8 - G 1/4 - G 1/2

# serie **EK**

## DESCRIPTION

Valves series "EK" are produced in the 3/2, 5/2 and 5/3 pneumatic functions. The piloting solenoid valve can be assembled perpendicular respect the body valve, thanks to a suitable bracket. The kind of construction is based on a balanced spool with static seal, being the seals supported by distance rings integral to the body. This series of valves, in the size G 1/8 and G 1/4, is prearranged for both manifold mounting (conveyed inlet and exhausts), or supply rail mounting (conveyed inlet), by means of rear notch screws. The versions size G 1/4 - 5 port are available even with "Namur" port pattern or with high flow rate (see series EK30 on page 2.70). Upon request, they can be supplied in compliance with ATEX directive, category 2GD.

## TECHNICAL DATA

Operating pressure	Monostable: 2,5 ÷ 10 bar Bistable: 2 ÷ 10 bar
Working temperature	0 ÷ +70 °C (-20 °C with dry air)
Fluid	Compressed air, filtered, continuous lubricated, unlubricated or dry lubricated
Port size	G 1/8 - G 1/4 - G 1/2
Pneumatic piloting port size	G 1/8
Nominal diameter	G 1/8 = 5 mm; G 1/4 = 7 mm; G 1/2 = 12 mm
Piloting solenoid valve	C/USCSVP - see chapter direct acting solenoid valves on page 2.14
Coils	USB - see chapter coils on page 2.17 USBG - see chapter coils on page 2.17* USBG2 - see chapter coils on page 2.17*
Electric connectors	USR 102/N9 - see chapter connectors on page 2.18 ULR1B - see chapter connectors on page 2.18*

\* Only for single valve  
(coil and connector overcome the overall dimensions of the valves)



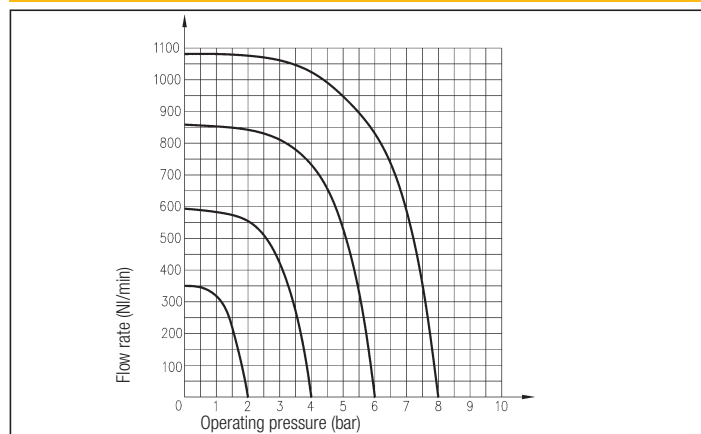
## MATERIALS

Bottoms	Anodized aluminium alloy
Body	Anodized aluminium alloy
Distance rings	Acetal resin
Springs	Galvanized steel
Seals	NBR rubber
Spools	Anodized aluminium alloy
Piston	Anodized aluminium alloy

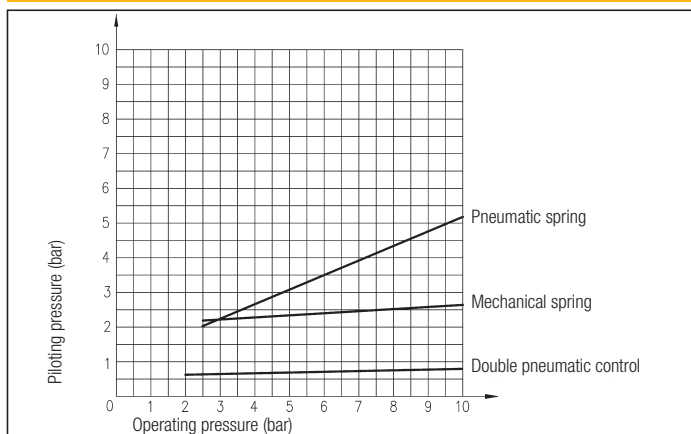
## SPARE PARTS

SEALS KIT	
3/2 - G 1/8	<b>EK/SG/8</b>
3/2 - G 1/4	<b>EK/SG/4</b>
3/2 - G 1/2	<b>EK/SG/2</b>
5/2 - G 1/8	<b>EKCA/SG/8</b>
5/3 - G 1/8	<b>EKCA/SG/8 - 5/3</b>
5/2 - G 1/4	<b>EKCA/SG/4</b>
5/3 - G 1/4	<b>EKCA/SG/4 - 5/3</b>
5/2 - G 1/2	<b>EKCA/SG/2</b>
5/3 - G 1/2	<b>EKCA/SG/2 - 5/3</b>
5/2 - G 1/4 Namur	<b>ENCA/SG/4</b>
5/3 - G 1/4 Namur	<b>ENCA/SG/4 - 5/3</b>

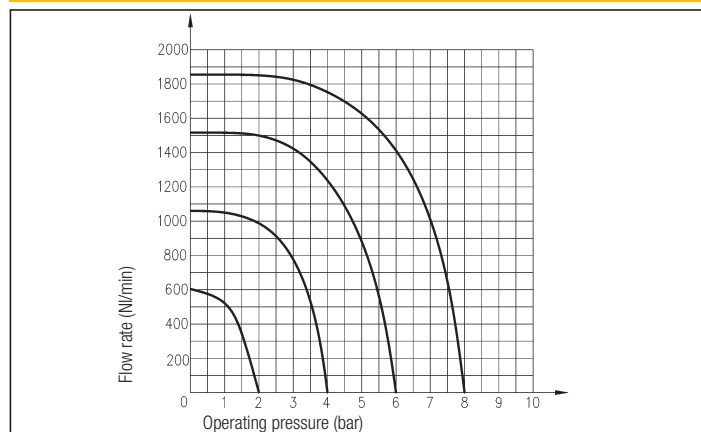
## FLOW CHART - EK G 1/8 - 3/2 & 5/2



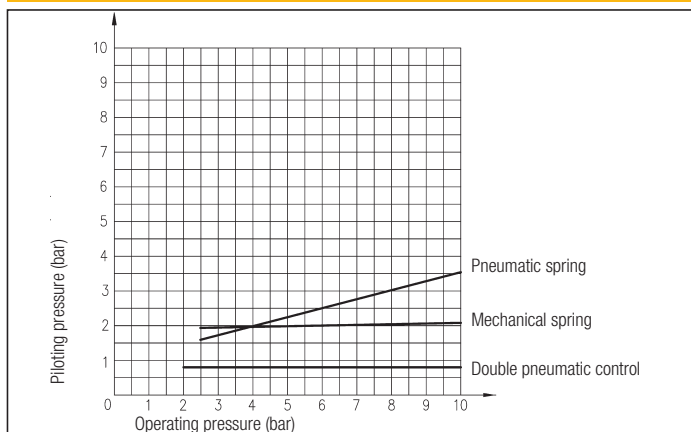
## PILOTING CHART - EK G 1/8



## FLOW CHART - EK G 1/4 - 3/2 & 5/2



## PILOTING CHART - EK G 1/4



2

### SOLENOID ACTUATED VALVES G 1/8 - 3 PORT

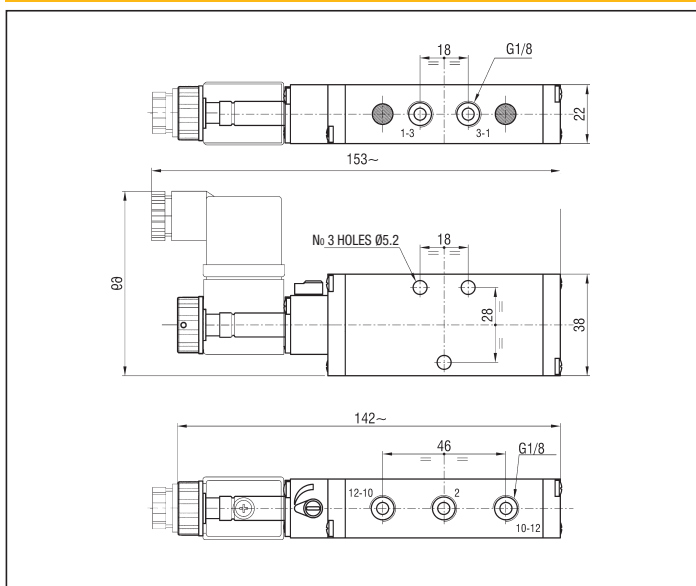
Symbol	Function	Controls		Response time at 6 bar (ms)		Flow rate at 6 bar $\Delta P = 1$ bar (NI/min)	Weight (g)	TYPE*
		Pilot	Return	Energized	De-energized			
	3/2 N.O. monostable	Solenoid	Mechanical spring	24	28	550	250	EKA8 KUC/ZR
		Solenoid	Pneumatic spring	18	27	550	245	EKA8 KUC/TQ
		Solenoid pilot assisted	Mechanical spring	24	28	550	250	EKA8 KUR/ZR
	3/2 N.C. monostable	Solenoid	Mechanical spring	32	31	550	250	EKC8 KUC/ZR
		Solenoid	Pneumatic spring	22	28	550	245	EKC8 KUC/TQ
		Solenoid pilot assisted	Mechanical spring	32	31	550	250	EKC8 KUR/ZR
	3/2 bistable	Solenoid	Solenoid	21	21	550	290	EK8 KUC/KUC
		Solenoid pilot assisted	Solenoid pilot assisted	21	21	550	290	EK8 KUR/KUR

P.S.: SUBSTITUTE THE LETTER "U" WITH THE LETTER "L" IN EACH SOLENOID CONTROL TYPE TO ORDER THE SOLENOID ACTUATED VALVES WITH SOLENOID AT 90° RESPECT THE BODY OF THE VALVE. E.G.: EKC8 KUC/TQ BECOMES EKC8 KLC/TQ (SEE ON PAGE 2.74 FOR THE MISSING DIMENSIONS)

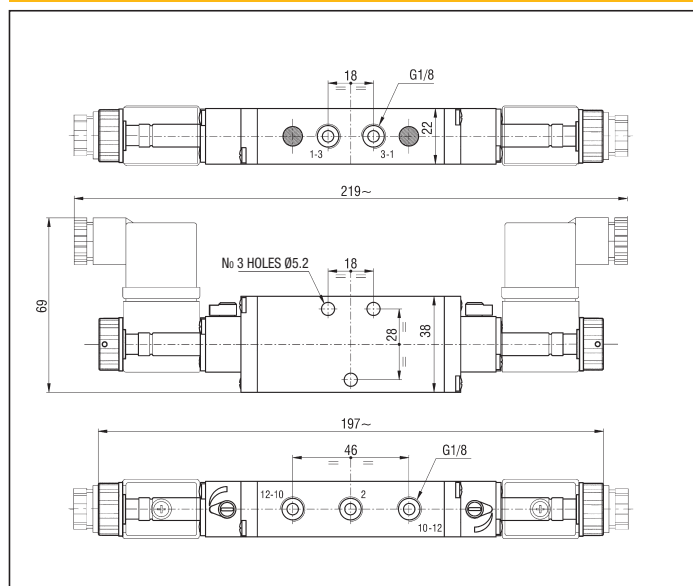
\*THE TYPES OF THE SOLENOID VALVES DO NOT INCLUDE COILS

/EX Consistent with the ATEX directive II 2GD c T5 T100°C -20°C ≤ Tas ≤ 60°C E.G.: EKA8 KUC/ZR/EX

### 3 PORT MONOSTABLE



### 3 PORT BISTABLE



SOLENOID ACTUATED VALVES G 1/8 - 5 PORT

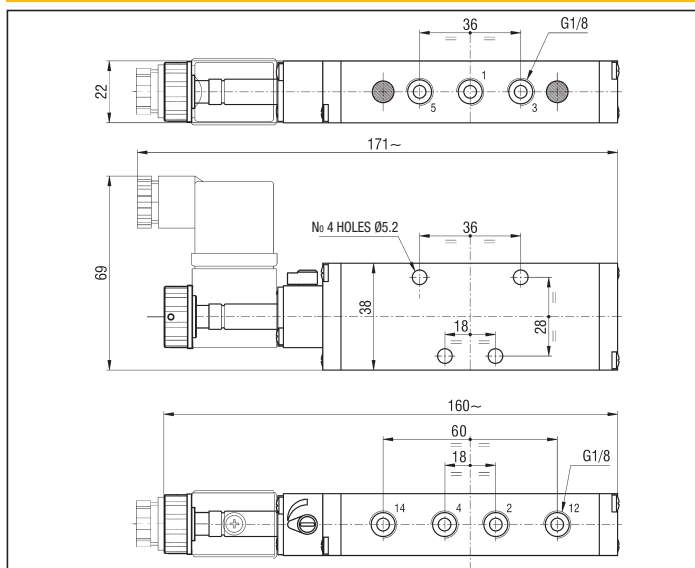
Symbol	Function	Controls		Response time at 6 bar (ms)		Flow rate at 6 bar $\Delta P = 1$ bar (l/min)	Weight (g)	TYPE*
		Pilot	Return	Energized	De-energized			
	5/2 monostable	Solenoid	Mechanical spring	20	30	550	300	EKCA8 KUC/ZR
		Solenoid	Mechanical spring	27	39	550	300	EKCA8 KUC/TQ
		Solenoid pilot assisted	Mechanical spring	20	30	550	300	EKCA8 KUR/ZR
	5/2 bistable	Solenoid	Solenoid	18	18	550	325	EKCA8 KUC/KUC
		Solenoid pilot assisted	Solenoid pilot assisted	18	18	550	325	EKCA8 KUR/KUR
	5/3 closed centre	Solenoid	Mechanical spring	23	37	425	335	EKCA8 SUC/SUC
		Solenoid pilot assisted	Mechanical spring	23	37	425	335	EKCA8 SUR/SUR
	5/3 open centre	Solenoid	Mechanical spring	23	37	500	345	EKCA8 AUC/AUC
		Solenoid pilot assisted	Mechanical spring	23	37	500	345	EKCA8 AUR/AUR
	5/3 pressure centre	Solenoid	Mechanical spring	20	35	425	335	EKCA8 PUC/PUC
		Solenoid pilot assisted	Mechanical spring	20	25	425	335	EKCA8 PUR/PUR

P.S.: SUBSTITUTE THE LETTER "U" WITH THE LETTER "L" IN EACH SOLENOID CONTROL TYPE TO ORDER THE SOLENOID ACTUATED VALVES WITH SOLENOID AT 90° RESPECT THE BODY OF THE VALVE. E.G.: EKCA8 KUC/TQ BECOMES EKCA8 KLC/TQ (SEE ON PAGE 2.74 FOR THE MISSING DIMENSIONS)

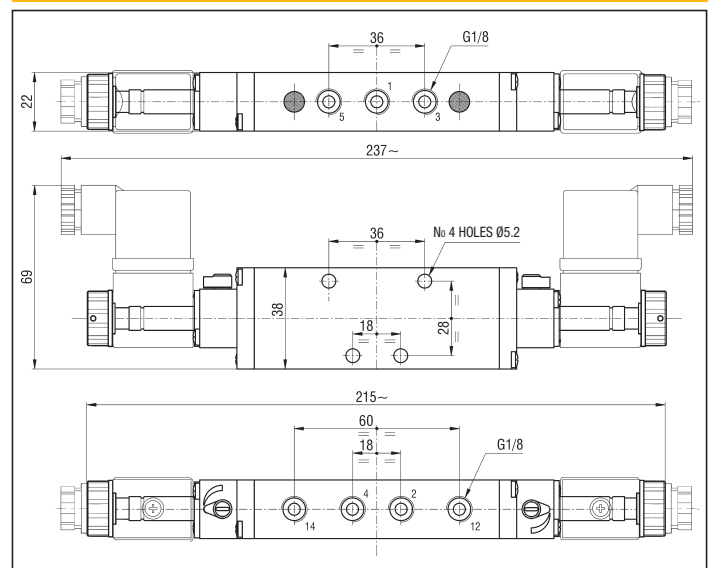
\*THE TYPES OF THE SOLENOID VALVES DO NOT INCLUDE COILS

/EX Consistent with the ATEX directive II 2GD c T5 T100°C -20°C ≤ Ta ≤ 60°C ES.: EKCA8 KUC/ZR/EX

5 PORT MONOSTABLE

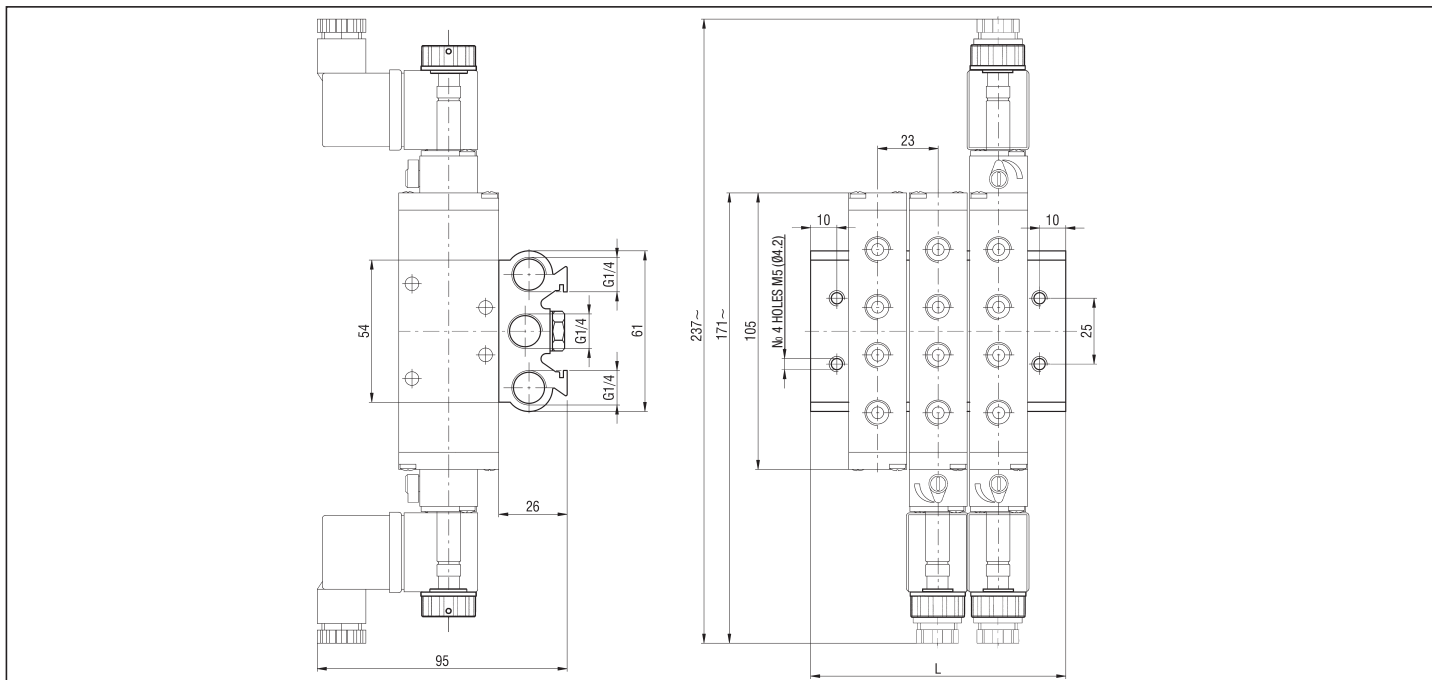


5 PORT AND 3 POSITIONS BISTABLE



2

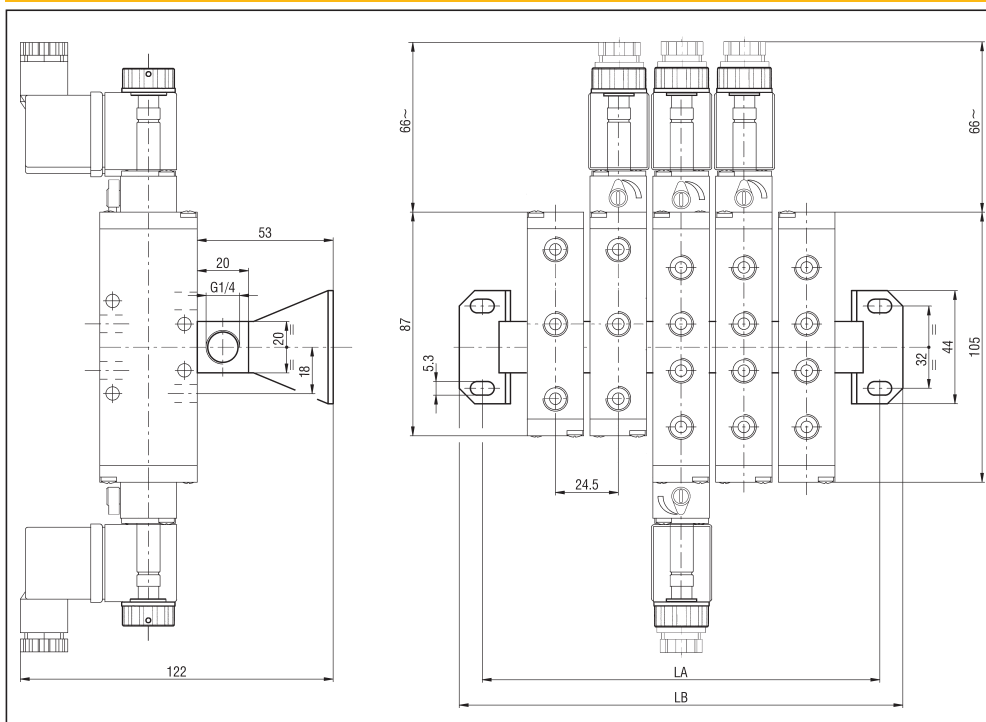
### BASE FOR MANIFOLD MOUNTING OF VALVES G 1/8 - KB/EK8



No of stations	2	3	4	5	6	8	10	12	14	16	18	20
L	74	97	120	143	166	212	258	304	350	396	442	488
Weight (g)	220	285	350	415	480	610	740	870	1000	1130	1260	1390
TYPE*	KB/EK8/2	KB/EK8/3	KB/EK8/4	KB/EK8/5	KB/EK8/6	KB/EK8/8	KB/EK8/10	KB/EK8/12	KB/EK8/14	KB/EK8/16	KB/EK8/18	KB/EK8/20

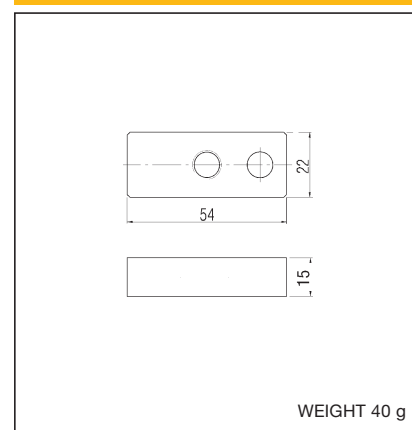
\*BASES ARE SUPPLIED COMPLETE WITH HOLLOW SCREWS AND SEALS

### SUPPLY RAIL FOR MANIFOLD MOUNTING OF VALVES G 1/8 - CEK8



\*SUPPLY RAILS ARE SUPPLIED COMPLETE WITH HOLLOW SCREWS, SEALS AND FIXING BRACKETS  
P.S.: CAN BE MOUNTED ONLY SILENCERS SERIES **SS-01** (SEE THE HIDDEN SILENCERS ON PAGE 5.52)

### BLANKING PLATE - KIT/PC/EK8



No of stations	2	3	5
LA	83	105	150
LB	101	123	168
Weight (g)	135	170	240
TYPE*	CEK8/2	CEK8/3	CEK8/5

2

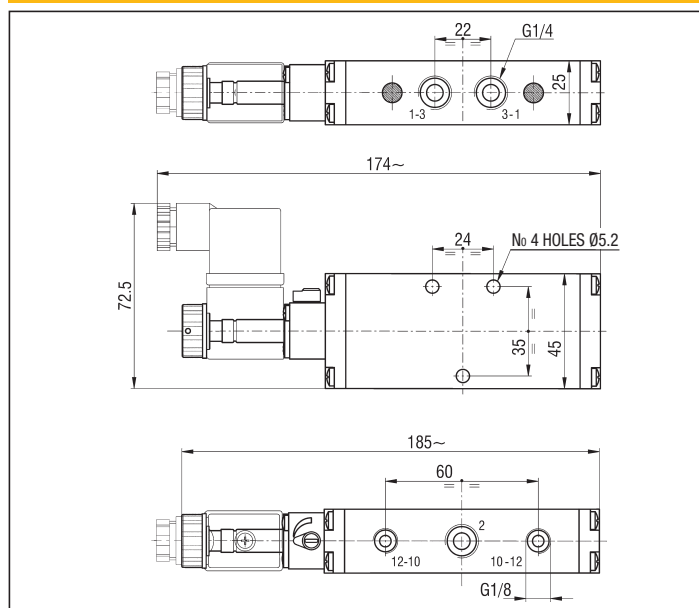
## SOLENOID ACTUATED VALVES G 1/4 - 3 PORT

Symbol	Function	Controls		Response time at 6 bar (ms)		Flow rate at 6 bar $\Delta P = 1$ bar (l/min)	Weight (g)	TYPE*
		Pilot	Return	Energized	De-energized			
	3/2 N.O. monostable	Solenoid	Mechanical spring	22	60	950	385	EKA4 KUC/ZR
		Solenoid	Pneumatic spring	24	50	950	370	EKA4 KUC/TQ
		Solenoid pilot assisted	Mechanical spring	22	60	950	385	EKA4 KUR/ZR
	3/2 N.C. monostable	Solenoid	Mechanical spring	22	60	950	385	EKC4 KUC/ZR
		Solenoid	Pneumatic spring	24	50	950	370	EKC4 KUC/TQ
		Solenoid pilot assisted	Mechanical spring	22	60	950	385	EKC4 KUR/ZR
	3/2 bistable	Solenoid	Solenoid	23	23	950	405	EK4 KUC/KUC
		Solenoid pilot assisted	Solenoid pilot assisted	23	23	950	405	EK4 KUR/KUR

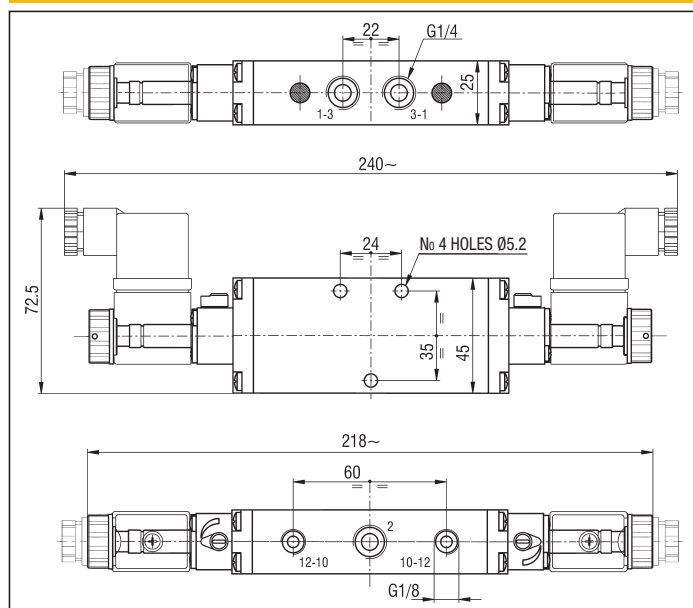
P.S.: SUBSTITUTE THE LETTER "U" WITH THE LETTER "L" IN EACH SOLENOID CONTROL TYPE TO ORDER THE SOLENOID ACTUATED VALVES WITH SOLENOID AT 90° RESPECT THE BODY OF THE VALVE. E.G.: EKC4 KUC/TQ BECOMES EKC4 KLC/TQ (SEE ON PAGE 2.74 FOR THE MISSING DIMENSIONS)  
\*THE TYPES OF THE SOLENOID VALVES DO NOT INCLUDE COILS

/EX Consistent with the ATEX directive II 2GD c T5 T100°C -20°C ≤ T<sub>a</sub> ≤ 60°C E.G.: EKA4 KUC/ZR/EX

### 3 PORT MONOSTABLE



### 3 PORT BISTABLE

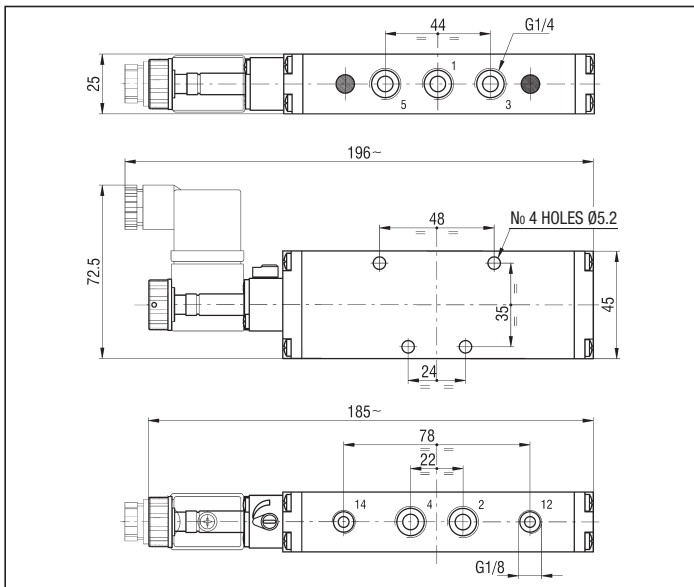


SOLENOID ACTUATED VALVES G 1/4 - 5 PORT

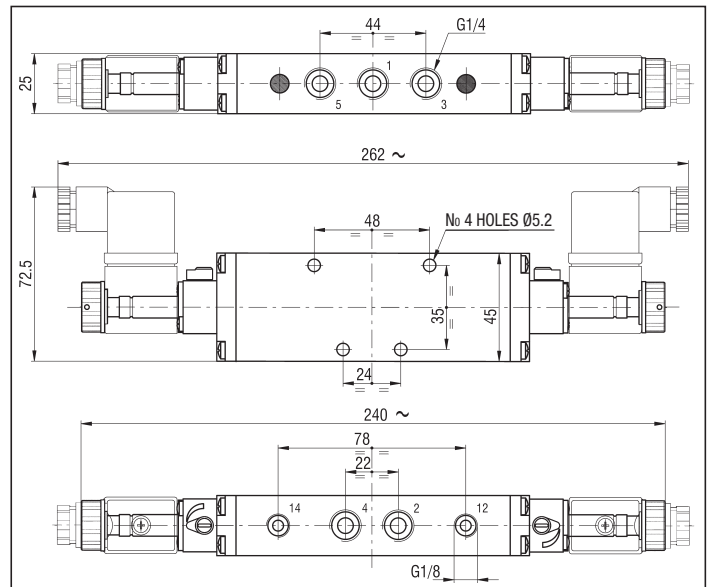
Symbol	Function	Controls		Response time at 6 bar (ms)		Flow rate at 6 bar $\Delta P = 1 \text{ bar (Nl/min)}$	Weight (g)	TYPE*
		Pilot	Return	Energized	De-energized			
	5/2 monostable	Solenoid	Mechanical spring	32	65	900	430	EKCA4 KUC/ZR
		Solenoid	Pneumatic spring	32	65	900	415	EKCA4 KUC/TQ
		Solenoid pilot assisted	Mechanical spring	32	65	900	430	EKCA4 KUR/ZR
	5/2 bistable	Solenoid	Solenoid	21	21	900	475	EKCA4 KUC/KUC
		Solenoid pilot assisted	Solenoid pilot assisted	21	21	900	475	EKCA4 KUR/KUR
	5/3 closed centre	Solenoid	Mechanical spring	25	50	510	490	EKCA4 SUC/SUC
		Solenoid pilot assisted	Mechanical spring	25	50	510	490	EKCA4 SUR/SUR
	5/3 closed centre	Solenoid	Mechanical spring	25	50	850	485	EKCA4 AUC/AUC
		Solenoid pilot assisted	Mechanical spring	25	50	850	485	EKCA4 AUR/AUR
	5/3 pressure centre	Solenoid	Mechanical spring	25	50	690	490	EKCA4 PUC/PUC
		Solenoid pilot assisted	Mechanical spring	25	50	690	490	EKCA4 PUR/PUR

P.S.: SUBSTITUTE THE LETTER "U" WITH THE LETTER "L" IN EACH SOLENOID CONTROL TYPE TO ORDER THE SOLENOID ACTUATED VALVES WITH SOLENOID AT 90° RESPECT THE BODY OF THE VALVE.  
 E.G.: **EKCA4 KUC/TQ** BECOMES **EKCA4 KLC/TQ** (SEE ON PAGE 2.74 FOR THE MISSING DIMENSIONS) - USE THE KIT/P/ENK TO CHANGE THE PNEUMATIC FUNCTION FROM 5/2 TO 3/2 (SEE ON PAGE 2.65).  
 \*THE TYPES OF THE SOLENOID VALVES DO NOT INCLUDE COILS /EX Consistent with the ATEX directive II 2GD c T5 T100°C -20°C ≤ Ta ≤ 60°C E.G.: **EKCA4 KUC/ZR/EX**

5 PORT MONOSTABLE



5 PORT AND 3 POSITIONS BISTABLE



2

## SOLENOID ACTUATED VALVES "NAMUR" PORT PATTERN G 1/4 - 5 PORT

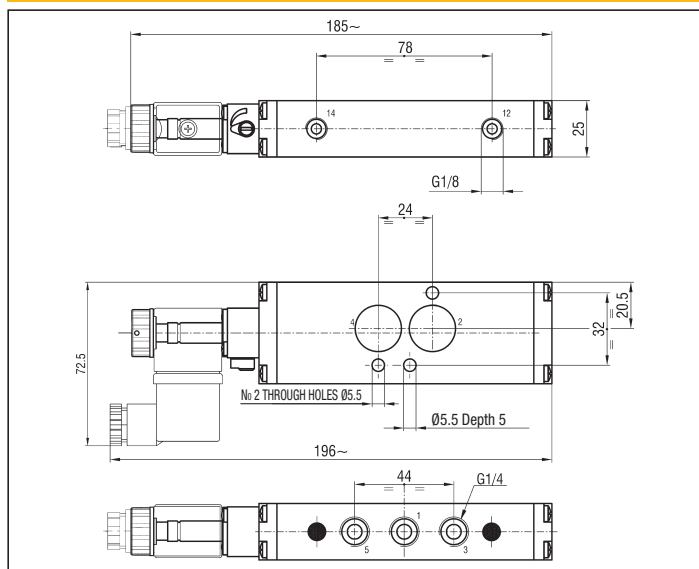
Symbol	Function	Controls		Response time at 6 bar (ms)		Flow rate at 6 bar $\Delta P = 1$ bar (NI/min)	Weight (g)	TYPE*
		Pilot	Return	Energized	De-energized			
	5/2 monostable	Solenoid	Mechanical spring	32	65	900	440	ENCA4 KUC/ZR
		Solenoid	Pneumatic spring	32	65	900	425	ENCA4 KUC/TQ
		Solenoid pilot assisted	Mechanical spring	32	65	900	440	ENCA4 KUR/ZR
	5/2 bistable	Solenoid	Solenoid	21	21	900	485	ENCA4 KUC/KUC
		Solenoid pilot assisted	Solenoid pilot assisted	21	21	900	485	ENCA4 KUR/KUR
	5/3 closed centre	Solenoid	Mechanical spring	25	50	510	500	ENCA4 SUC/SUC
		Solenoid pilot assisted	Mechanical spring	25	50	510	500	ENCA4 SUR/SUR
	5/3 open centre	Solenoid	Mechanical spring	25	50	850	495	ENCA4 AUC/AUC
		Solenoid pilot assisted	Mechanical spring	25	50	850	495	ENCA4 AUR/AUR
	5/3 pressure centre	Solenoid	Mechanical spring	25	50	690	500	ENCA4 PUC/PUC
		Solenoid pilot assisted	Mechanical spring	25	50	690	500	ENCA4 PUR/PUR

PS.: SUBSTITUTE THE LETTER "U" WITH THE LETTER "L" IN EACH SOLENOID CONTROL TYPE TO ORDER THE SOLENOID ACTUATED VALVES WITH SOLENOID AT 90° RESPECT THE BODY OF THE VALVE. E.G.: ENCA4 KUC/TQ BECOMES ENCA4 KLC/TQ (SEE ON PAGE 2.74 FOR THE MISSING DIMENSIONS) \*THE TYPES OF THE SOLENOID VALVES DO NOT INCLUDE COILS

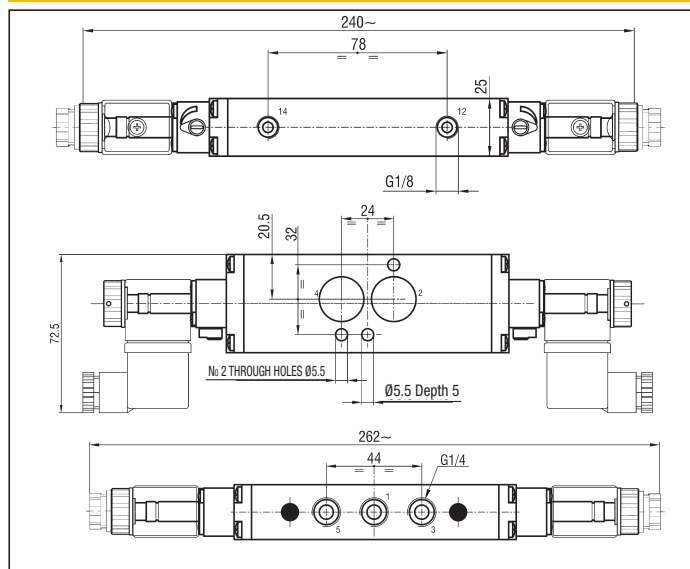
/EX Consistent with the ATEX directive II 2GD c T5 T100°C -20°C ≤ Ta ≤ 60°C ES.: ENCA4 KUC/ZR/EX

THE VALVES ARE SUPPLIED WITH O-RING

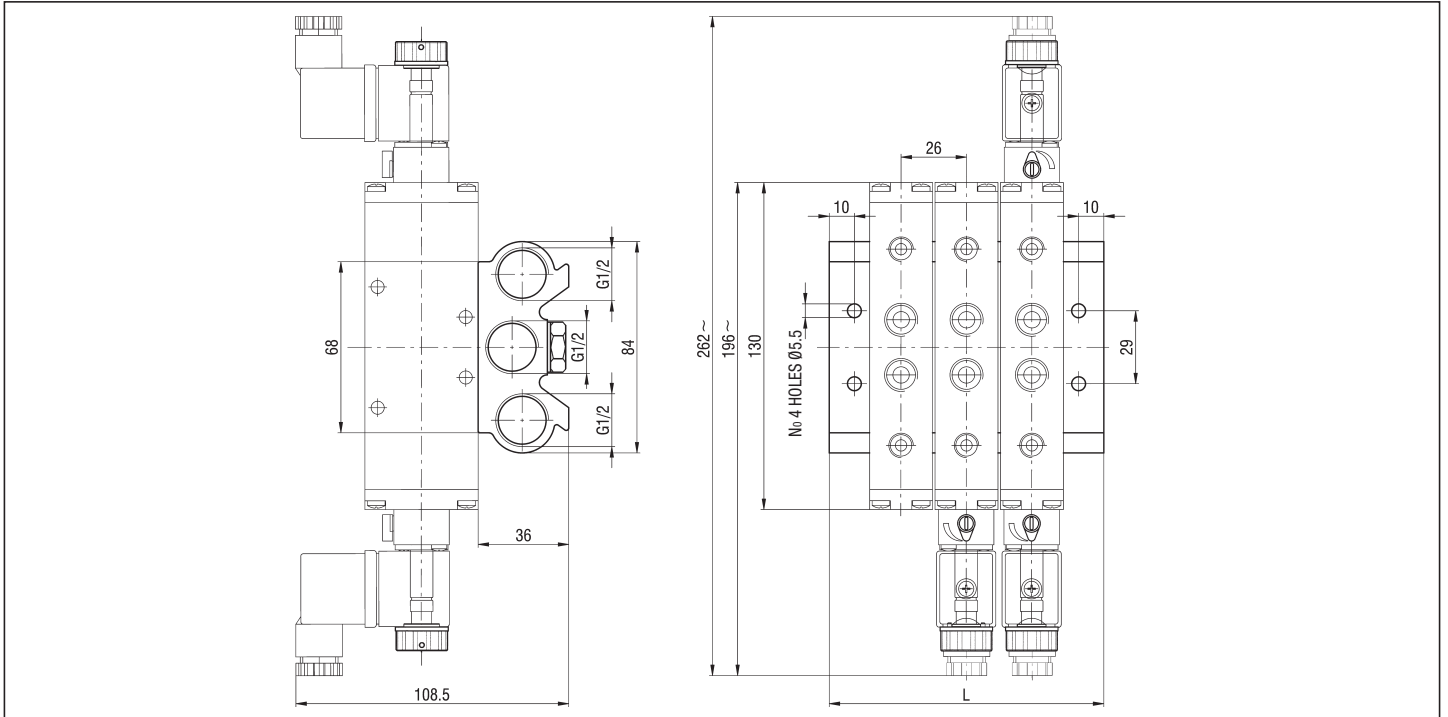
### "NAMUR" PORT PATTERN - 5 PORT MONOSTABLE



### "NAMUR" PORT PATTERN - 5 PORT AND 3 POSITIONS BISTABLE



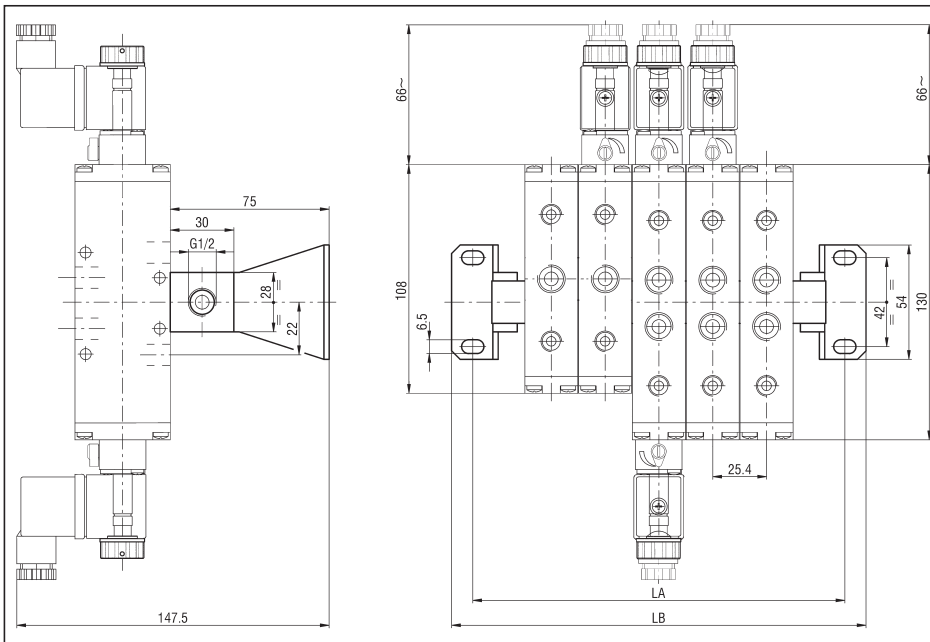
BASE FOR MANIFOLD MOUNTING OF VALVES G 1/4 - KB/EK4



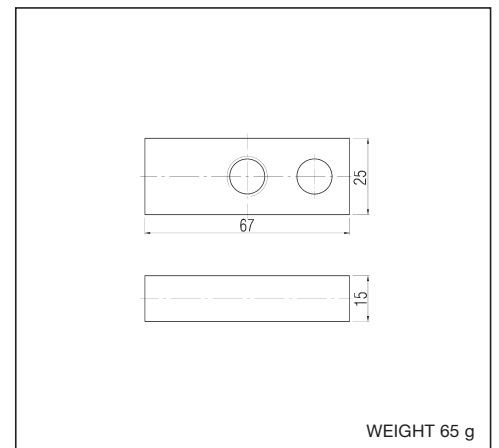
No of stations	2	3	4	5	6	8	10	12	14	16	18	20
L	83	109	135	161	187	239	291	343	395	447	499	551
Weight (g)	460	590	720	850	980	1240	1500	1760	2020	2280	2540	2800
TYPE*	KB/EK4/2	KB/EK4/3	KB/EK4/4	KB/EK4/5	KB/EK4/6	KB/EK4/8	KB/EK4/10	KB/EK4/12	KB/EK4/14	KB/EK4/16	KB/EK4/18	KB/EK4/20

\*BASES ARE SUPPLIED COMPLETE WITH NOTCH SCREWS AND SEALS

SUPPLY RAIL FOR MANIFOLD MOUNTING OF VALVES G 1/4 - CEK4



BLANKING PLATE - KIT/PC/EK4



No of stations	2	3	5
LA	99	125	176
LB	119	145	196
Weight (g)	310	390	550
TYPE*	CEK4/2	CEK4/3	CEK4/5

\* SUPPLY RAILS ARE SUPPLIED COMPLETE WITH NOTCH SCREWS, SEALS AND FIXING BRACKETS  
P.S.: CAN BE MOUNTED ONLY SILENCERS SERIES **SS-02** (SEE THE HIDDEN SILENCERS ON PAGE 5.52)

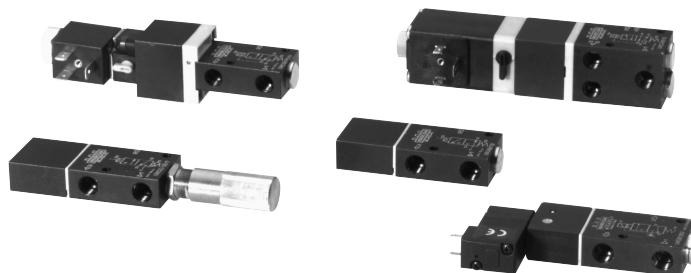


### DESCRIPTION

Valves series "UK" are produced in the 2/2, 3/2 and 5/2 monostable pneumatic functions. In the 3 port solenoid control version with small pilot system, sizes G 1/8 and G 1/4, support the 15 mm direct acting solenoid valve (type UMCSV with fixed position). All the other electric versions can support the 32 mm direct acting solenoid valve, type ULCSV/R (with fixed position), type C/USCSVG with sleeve  $\varnothing$  9 mm (with fixed position and rotatable coils series USB and USBG) or the amplifier valve XVF4 for a sensible pneumatic piloting (see page 3.37). The 3/2 N.C. pilot actuated valves can also be used to switch vacuum thanks to a suitably reinforced spring.

The poppet design assures high flow and high life. This series of valves, in the sizes G 1/8, G 1/4 and G 1/2, is prearranged for base mounting with conveyed inlet by means of rear notch screws.

Upon request they comply with ATEX directive: 2GD category for pilot and solenoid actuated valves with coil type "USBG2" and 3GD category for the solenoid actuated valves with other coils type.



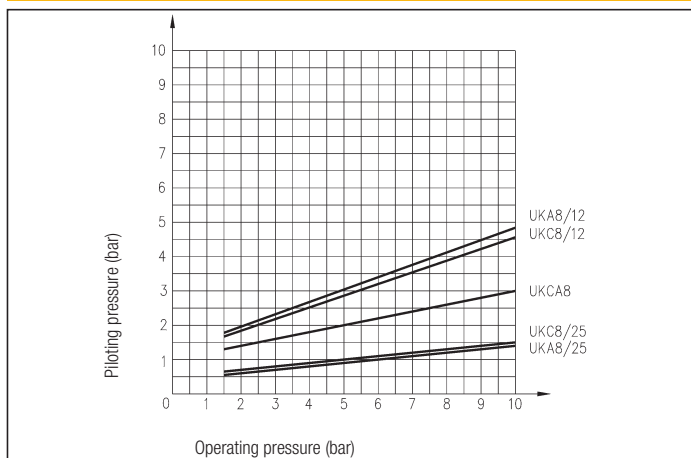
### TECHNICAL DATA

Operating pressure	Solenoid actuated: 1,5 ÷ 10 bar Pilot actuated: 1,5 ÷ 12 bar
Working temperature	0 ÷ +70 °C (-20 °C with dry air)
Fluid	Compressed air, filtered, continuous lubricated, unlubricated or dry lubricated - vacuum
Port size	G 1/8 - G 1/4 - G 1/2 - G 1
Pneumatic piloting port size	G 1/8
Nominal diameter	G 1/8 = 6 mm; G 1/4 = 8,5 mm G 1/2 = 12 mm; G 1 = 23 mm
Piloting solenoid valves	UMCSV - see chapter direct acting solenoid valves on page 2.5 ULCSV/R - see chapter direct acting solenoid valves on page 2.8 C/USCSVG - see chapter direct acting solenoid valves on page 2.16
Pneumatic piloting valve	XVF4 - see chapter complementary valves on page 3.37
Coils (only for C/USCSVG)	USB - see chapter coils on page 2.17 USBG - see chapter coils on page 2.17 USBG2 - see chapter coils on page 2.17
Electric connectors	USR102/N9 - see chapter connectors on page 2.18 ULR1B - see chapter connectors on page 2.18 MEK192/N - see chapter connectors on page 2.18

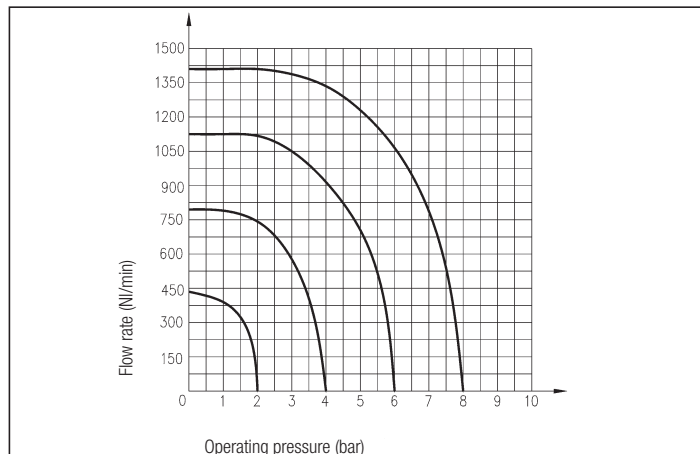
### MATERIALS

Control rod	Hardened and nickel-plated steel
Body	Anodized aluminium alloy
Molle	Acciaio INOX
Seals	NBR rubber
Bush rod	Brass
Piston	Acetal resin
Terminal strip	Acetal resin
Washer	Brass
End plug	Nickel-plated brass
Clamping screws	Steel

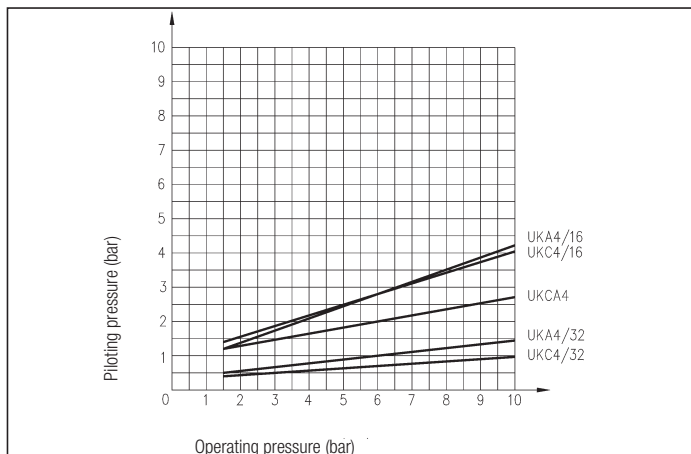
### PILOTING CHART - UK G 1/8



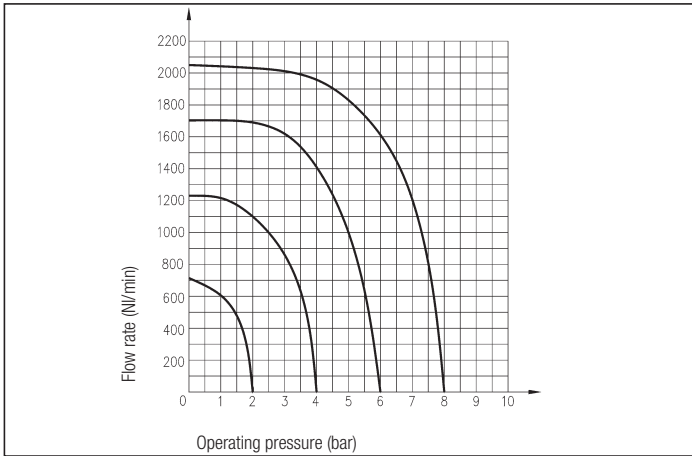
### FLOW CHART - UK G 1/8 - 5/2



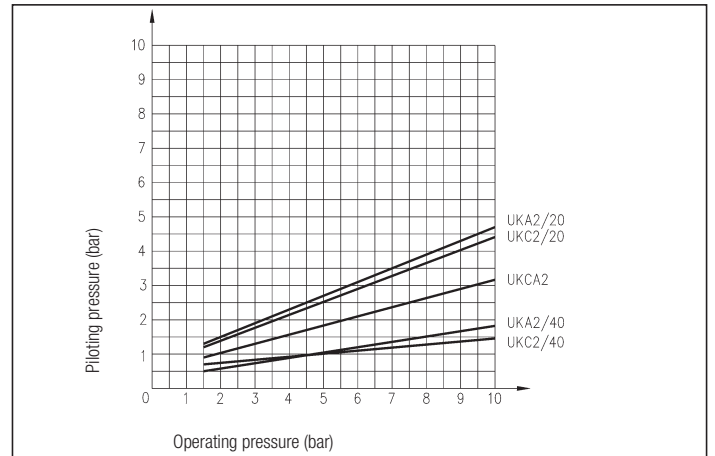
### PILOTING CHART - UK G1/4



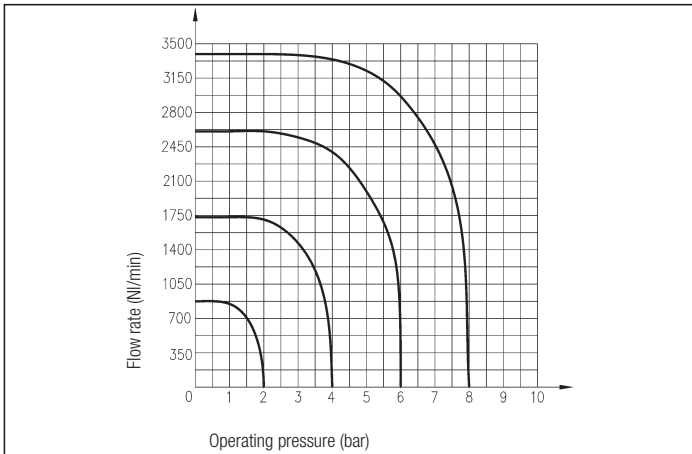
FLOW CHART - UK G 1/4 - 5/2



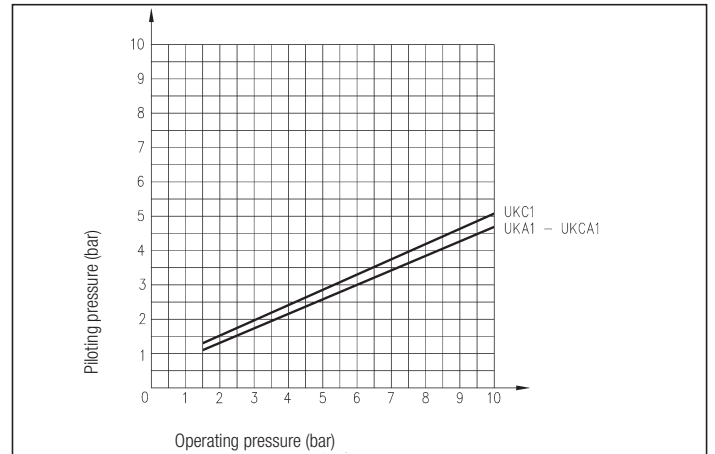
PILOTING CHART - UK G 1/2



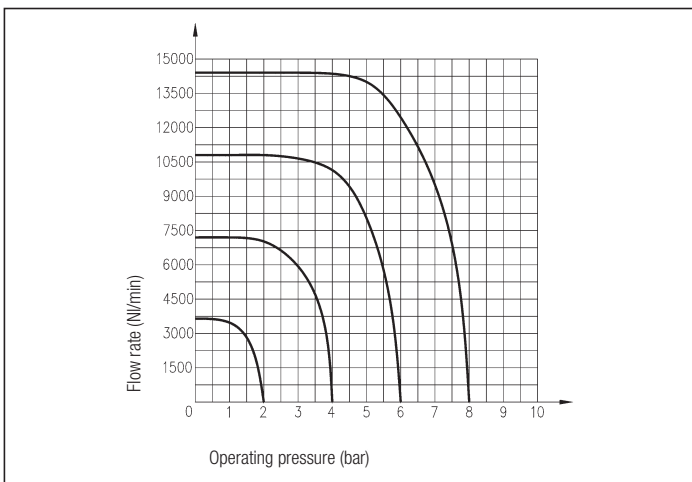
FLOW CHART - UK G 1/2 - 5/2



PILOTING CHART - UK G 1



FLOW CHART - UK G 1 - 5/2



SPARE PARTS

SEALS KIT	
3/2 N.O. G 1/8 small pilot system	<b>UKA/12/SG/8</b>
3/2 N.C. G 1/8 small pilot system	<b>UKC/12/SG/8</b>
3/2 N.O. G 1/8 big pilot system	<b>UKA/25/SG/8</b>
3/2 N.C. G 1/8 big pilot system	<b>UKC/25/SG/8</b>
5/2 G 1/8	<b>UKCA/SG/8</b>
3/2 N.O. G 1/4 small pilot system	<b>UKA/16/SG/4</b>
3/2 N.C. G 1/4 small pilot system	<b>UKC/16/SG/4</b>
3/2 N.O. G 1/4 big pilot system	<b>UKA/32/SG/4</b>
3/2 N.C. G 1/4 big pilot system	<b>UKC/32/SG/4</b>
5/2 G 1/4	<b>UKCA/SG/4</b>
3/2 N.O. G 1/2 small pilot system	<b>UKA/20/SG/2</b>
3/2 N.C. G 1/2 small pilot system	<b>UKC/20/SG/2</b>
3/2 N.O. G 1/2 big pilot system	<b>UKA/40/SG/2</b>
3/2 N.C. G 1/2 big pilot system	<b>UKC/40/SG/2</b>
5/2 G 1/2	<b>UKCA/SG/2</b>
3/2 N.O. G 1	<b>UKA/SG/1</b>
3/2 N.C. G 1	<b>UKC/SG/1</b>

2

### SOLENOID ACTUATED VALVES G 1/8 - 2, 3 and 5 PORT

Symbol	Function	Controls		Response time at 6 bar (ms)		Flow rate at 6 bar $\Delta P = 1 \text{ bar (l/min)}$	Weight (g)	TYPE*
		Pilot	Return	Energized	De-energized			
	3/2 N.O. monostable	Small solenoid	Mechanical spring	10	28	700	108	UKA 8/12/U**
	3/2 N.C. monostable	Small solenoid	Mechanical spring	10	28	700	108	UKC 8/12/U**
	3/2 N.O. monostable	Big solenoid	Mechanical spring	18	38	700	135	UKA 8/25/U***
	3/2 N.C. monostable	Big solenoid	Mechanical spring	18	38	700	135	UKC 8/25/U***
	5/2 monostable	Solenoid	Mechanical spring	19	40	650	203	UKCA 8/U***

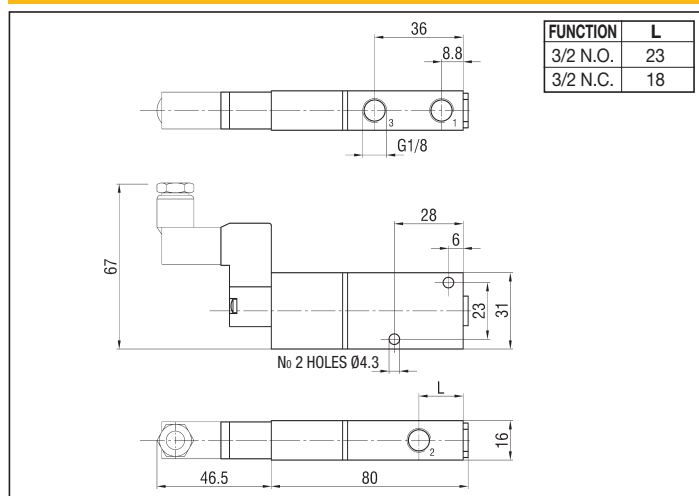
\* /EX Consistent with the ATEX directive II 2GD c T5 T100°C -20°C ≤ T<sub>as</sub> ≤ 60°C E.G.: UKCA8/U/EX /EX Consistent with the ATEX directive II 3G c Ex nA IIC T5 Gc -5°C ≤ T<sub>as</sub> ≤ 50°C E.G.: UKA8/12/U2400/EX II 3D c Ex tc IIIC T100°C IP65 Dc

\*\* TYPES OF THESE SOLENOID VALVES INCLUDE THE PILOTING SOLENOID VALVES "UMCSV" - SEE ON PAGE 2.5 (SPECIFY THE VOLTAGE IN THE ORDER)

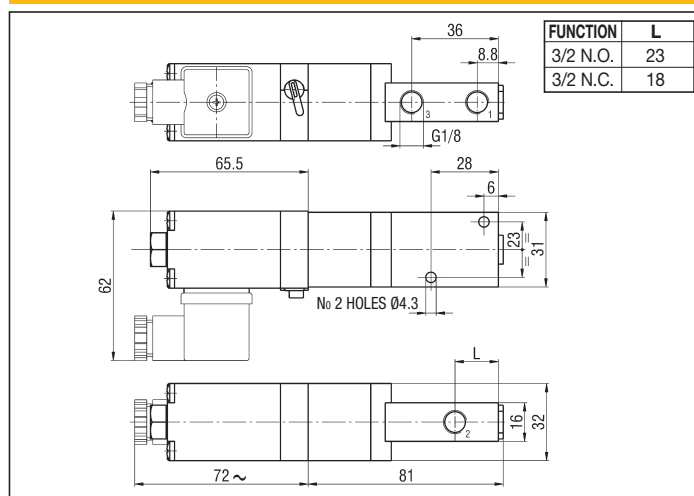
\*\*\* TYPES OF THESE SOLENOID VALVES DO NOT INCLUDE THE PILOTING SOLENOID VALVES (SEE ON PAGE 2.9 FOR "ULCSV/R" AND ON PAGE 2.16 FOR "C/USCSVG") WHEREAS USING AS PILOT THE VALVE "XVF4" THE RESULT IS A LOW PRESSURE PILOT ACTUATED VALVE (FOR "XVF4" - SEE ON PAGE 3.37)

P.S.: ADD AT THE TYPE OF THE VALVES 3/2 THE LETTER "H" BETWEEN THE LETTERS "K" AND "A" (OR "C") TO ORDER 2/2 N.O. (OR 2/2 N.C.) VALVES. E.G.: UKHA 8/12/U; UKHC 8/25/U

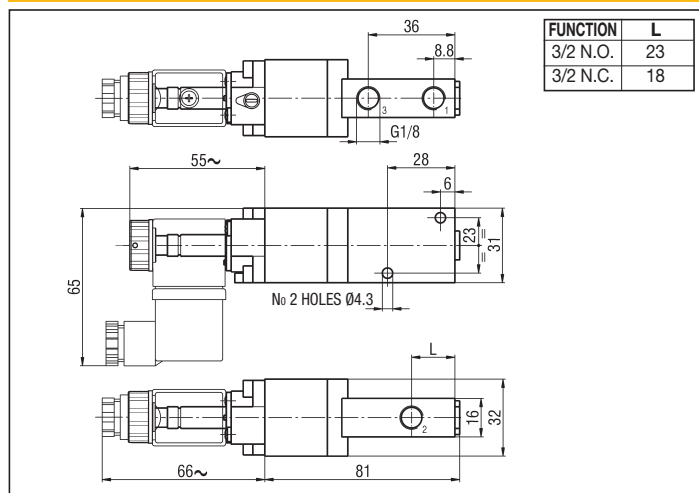
#### 3 PORT SMALL SOLENOID



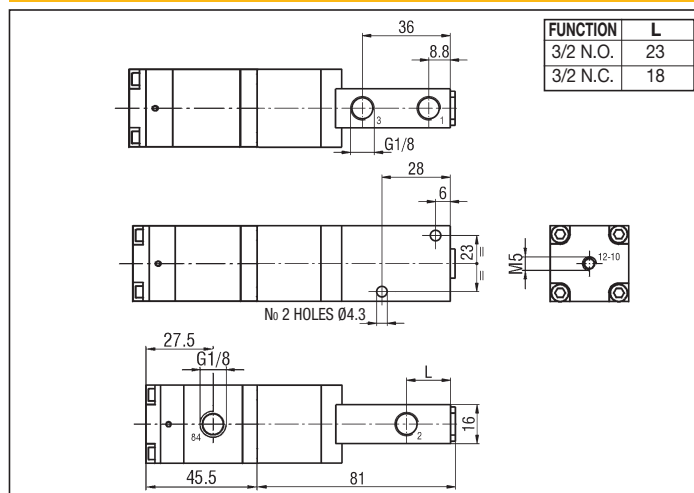
#### 3 PORT BIG SOLENOID WITH ULCSV/R



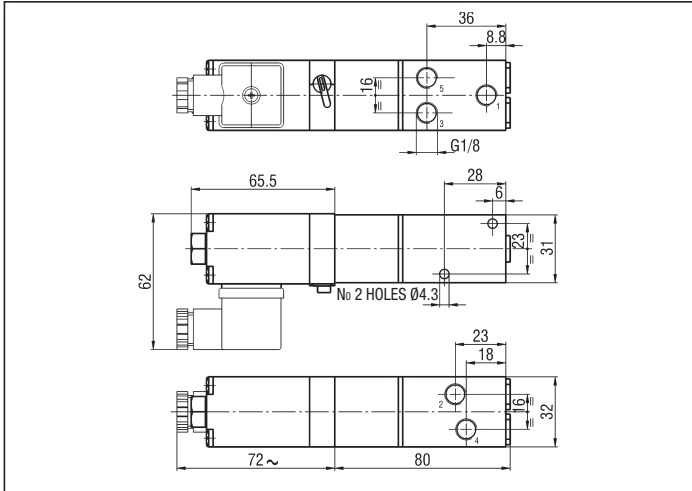
#### 3 PORT BIG SOLENOID WITH C/USCSVG



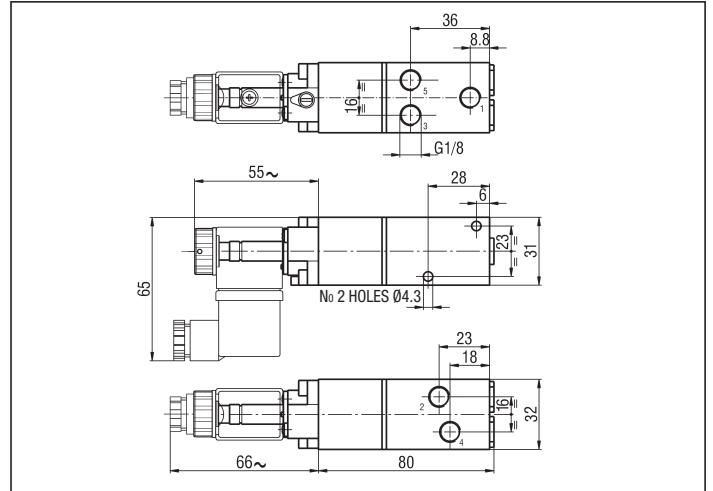
#### 3 PORT WITH XVF4



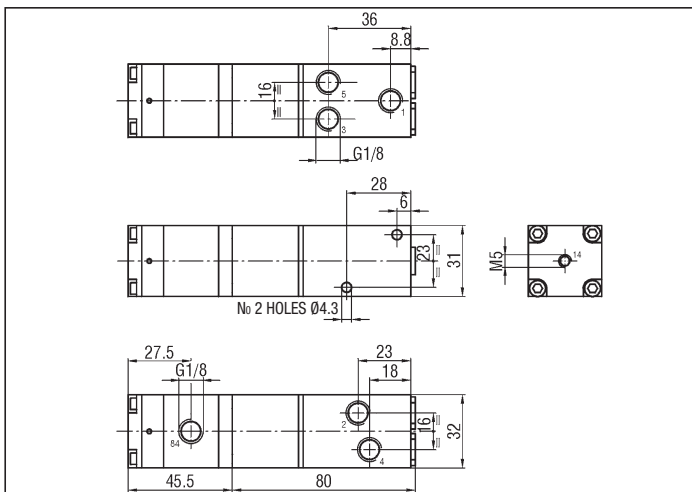
5 PORT WITH ULCSV/R



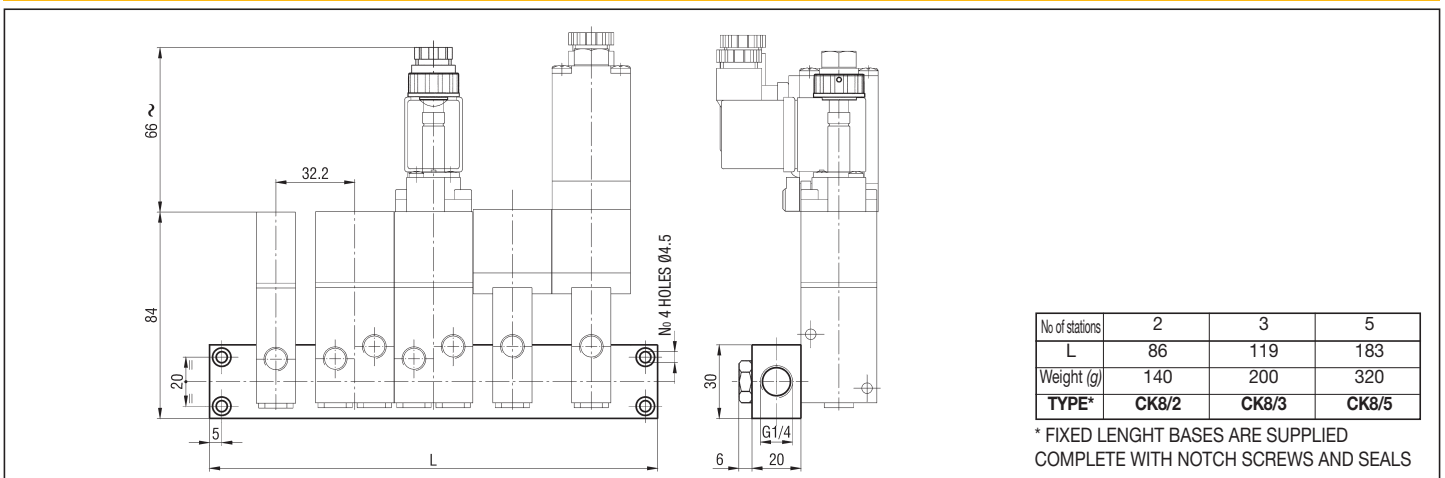
5 PORT WITH C/USCSVG



5 PORT WITH XVF4



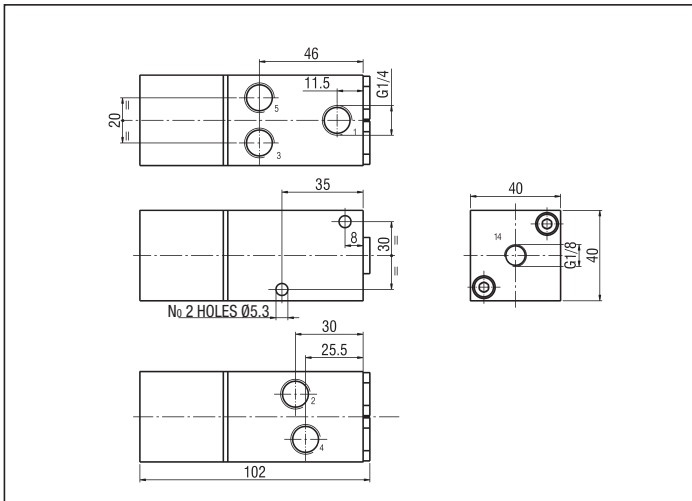
FIXED LENGTH BASE FOR MANIFOLD MOUNTING OF VALVES G 1/8 - CK8



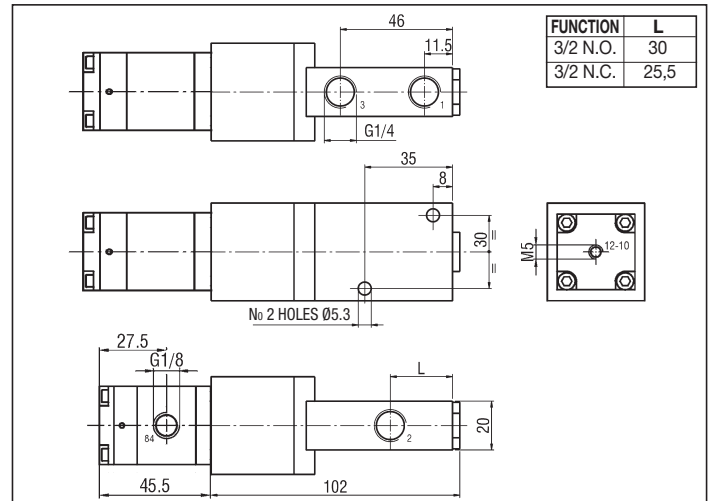
No of stations	2	3	5
L	86	119	183
Weight (g)	140	200	320
TYPE*	CK8/2	CK8/3	CK8/5

\* FIXED LENGTH BASES ARE SUPPLIED COMPLETE WITH NOTCH SCREWS AND SEALS

## 5 PORT



## 3 PORT WITH XVF4



## SOLENOID ACTUATED VALVES G 1/4 - 2, 3 and 5 PORT

Symbol	Function	Controls		Response time at 6 bar (ms)		Flow rate at 6 bar $\Delta P = 1$ bar (l/min)	Weight (g)	TYPE*
		Pilot	Return	Energized	De-energized			
	3/2 N.O. monostable	Small solenoid	Mechanical spring	10	28	950	225	UKA 4/16/U**
	3/2 N.C. monostable	Small solenoid	Mechanical spring	10	28	1100	230	UKC 4/16/U**
	3/2 N.O. monostable	Big solenoid	Mechanical spring	20	30	950	280	UKA 4/32/U***
	3/2 N.C. monostable	Big solenoid	Mechanical spring	20	30	1100	280	UKC 4/32/U***
	5/2 monostable	Solenoid	Mechanical spring	24	45	1000	415	UKCA 4/U***

\*EX Consistent with the ATEX directive II 2GD c T5 T100°C -20°C ≤ Ta ≤ 60°C ES.: UKCA4/U/EX

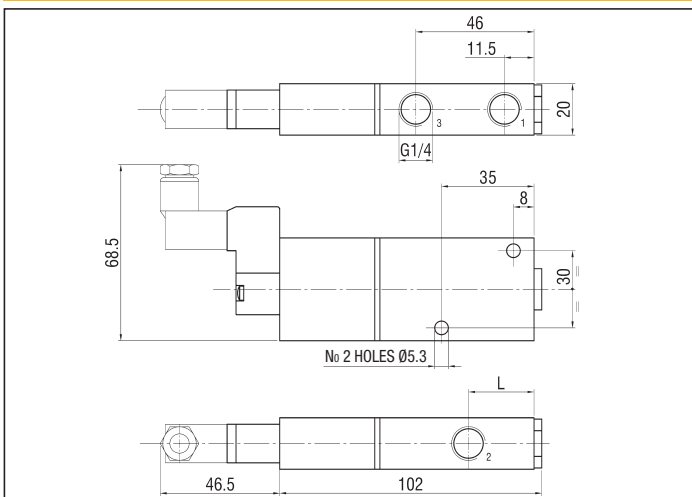
/EX Consistent with the ATEX directive II 3G c Ex nA IIC T5 Gc -5°C ≤ Ta ≤ 50°C ES.: UKA4/16/U2400/EX II 3D c Ex tc IIIC T100°C IP65 Dc

\*\* TYPES OF THESE SOLENOID VALVES INCLUDE THE PILOTING SOLENOID VALVES "UMCSV" - SEE ON PAGE 2.5 (SPECIFY THE VOLTAGE IN THE ORDER)

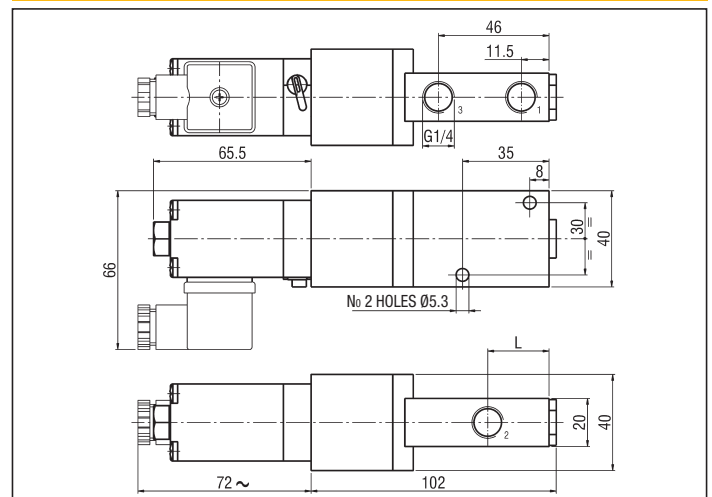
\*\*\* TYPES OF THESE SOLENOID VALVES DO NOT INCLUDE THE PILOTING SOLENOID VALVES (SEE ON PAGE 2.9 FOR "ULCSV/R" AND ON PAGE 2.16 FOR "C/USCSVG") WHEREAS USING AS PILOT THE VALVE "XVF4" THE RESULT IS A LOW PRESSURE PILOT ACTUATED VALVE (FOR "XVF4" - SEE ON PAGE 3.37)

P.S.: ADD AT THE TYPE OF THE VALVES 3/2 THE LETTER "H" BETWEEN THE LETTERS "K" AND "A" (OR "C") TO ORDER 2/2 N.O. (OR 2/2 N.C.) VALVES. E.G.: UKHA 4/16/U; UKHC 4/32/U

## 3 PORT SMALL SOLENOID

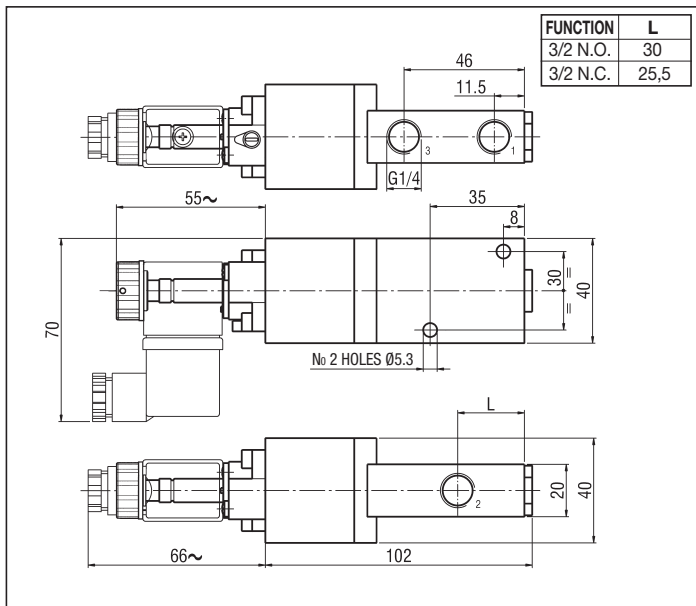


## 3 PORT BIG SOLENOID WITH ULCSV/R

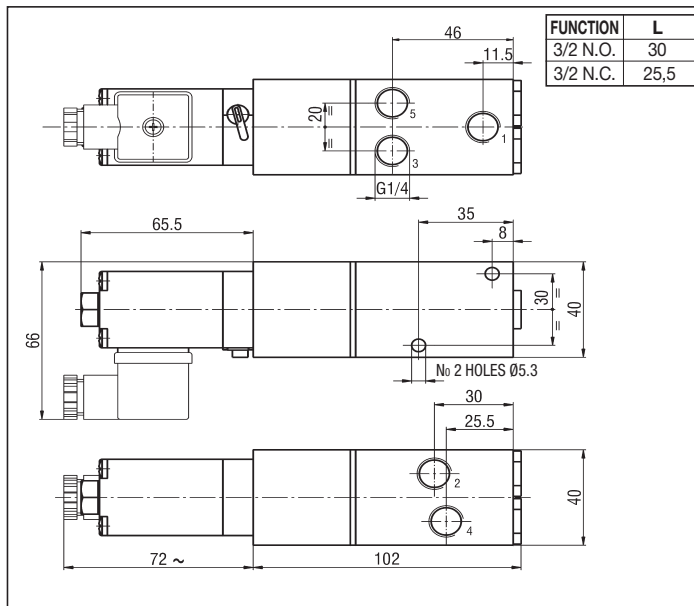


2

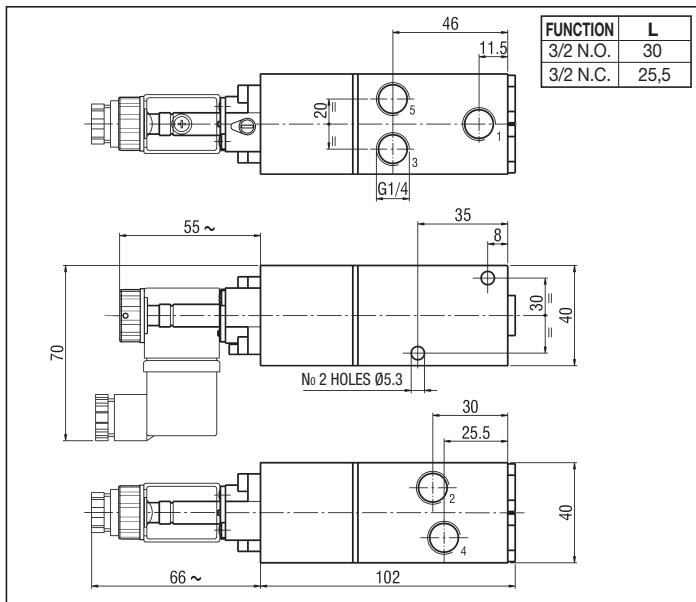
### 3 PORT BIG SOLENOID WITH C/USCSVG



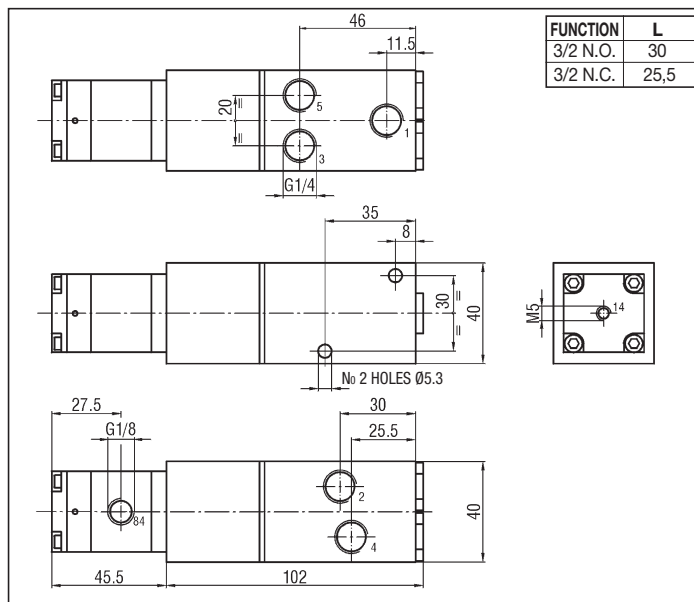
### 5 PORT WITH ULCSV/R



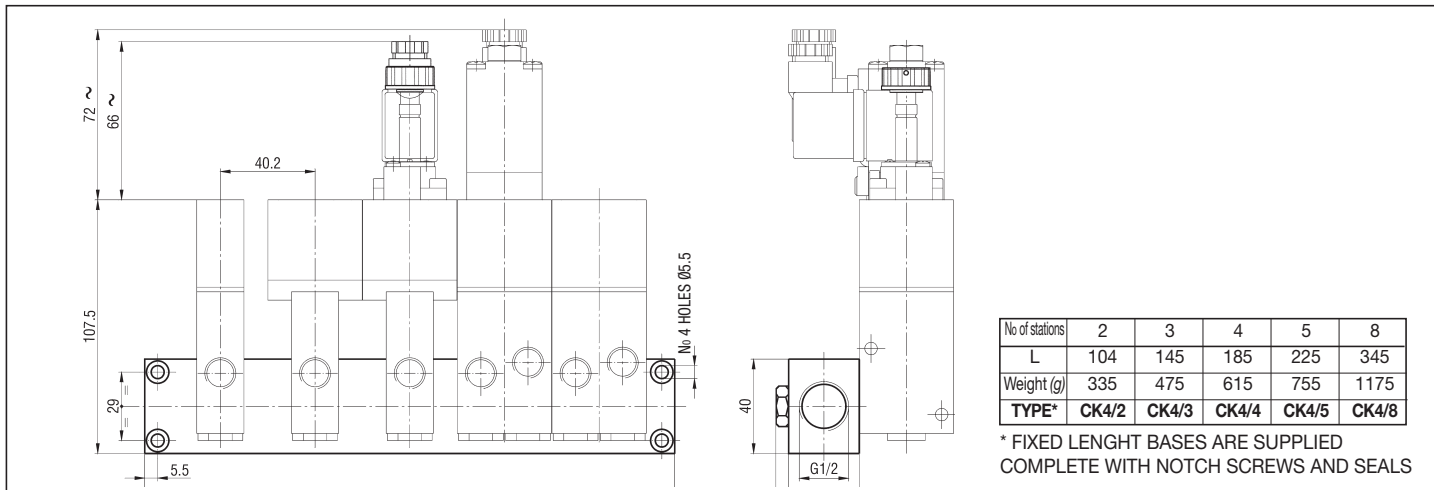
### 5 PORT WITH C/USCSVG



### 5 PORT WITH XVF4

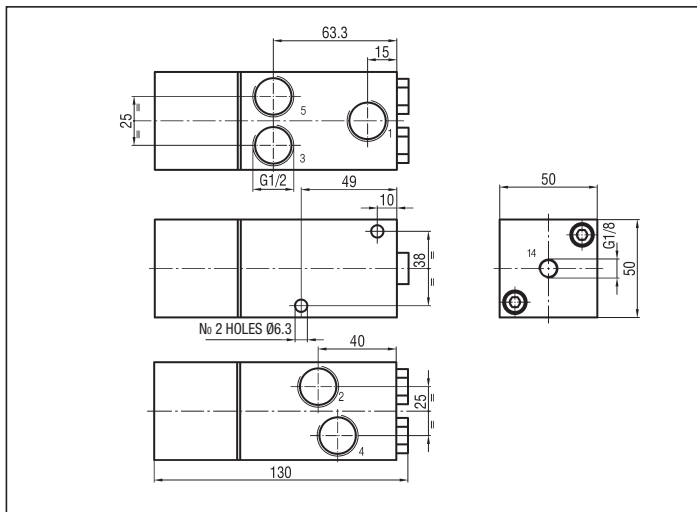


### FIXED LENGTH BASE FOR MANIFOLD MOUNTING OF VALVES G 1/4 - CK4

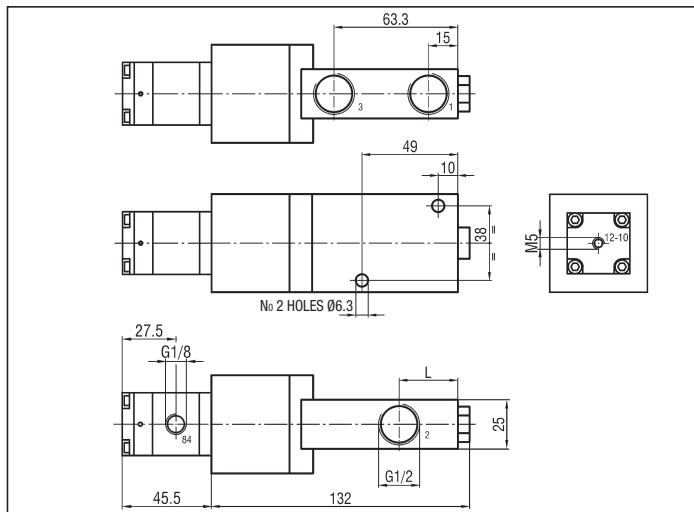


2

### 5 PORT



### 3 PORT WITH XVF4



### SOLENOID ACTUATED VALVES G 1/2 - 2, 3 and 5 PORT

Symbol	Function	Controls		Response time at 6 bar (ms)		Flow rate at 6 bar $\Delta P = 1 \text{ bar}$ (Nl/min)	Weight (g)	TYPE*
		Pilot	Return	Energized	De-energized			
	3/2 N.O. monostable	Small solenoid	Mechanical spring	24	32	1900	430	UKA 2/20/U**
	3/2 N.C. monostable	Small solenoid	Mechanical spring	24	32	2100	440	UKC 2/20/U**
	3/2 N.O. monostable	Big solenoid	Mechanical spring	24	32	1900	530	UKA 2/40/U***
	3/2 N.C. monostable	Big solenoid	Mechanical spring	24	32	2100	540	UKC 2/40/U***
	5/2 monostable	Solenoid	Mechanical spring	24	32	2000	810	UKCA 2/U***

\*EX Consistent with the ATEX directive II 2GD c T5 T100°C -20°C ≤ Ta ≤ 60°C ES.: UKCA2/U/EX \*EX Consistent with the ATEX directive II 3G c Ex nA IIC T5 Gc -5°C ≤ Ta ≤ 50°C E.G.: UKA2/20/U2400/EX II 3D c Ex tc IIC T100°C IP65 Dc

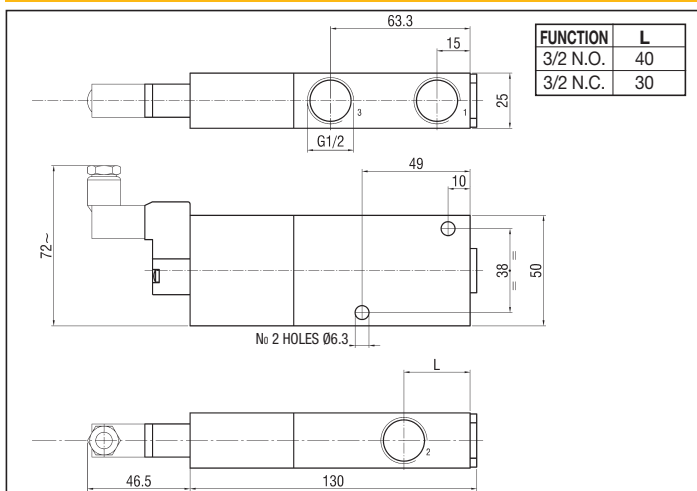
\*\* TYPES OF THESE SOLENOID VALVES INCLUDE THE PILOTING SOLENOID VALVES "UMCSV" - SEE ON PAGE 2.5 (SPECIFY THE VOLTAGE IN THE ORDER)

\*\*\* TYPES OF THESE SOLENOID VALVES DO NOT INCLUDE THE PILOTING SOLENOID VALVES (SEE ON PAGE 2.9 FOR "ULCSV/R" AND ON PAGE 2.13 FOR "C/USCSVG") WHEREAS USING AS PILOT THE VALVE "XVF4" THE RESULT IS A LOW PRESSURE PILOT ACTUATED VALVE (FOR "XVF4" - SEE ON PAGE 3.37)

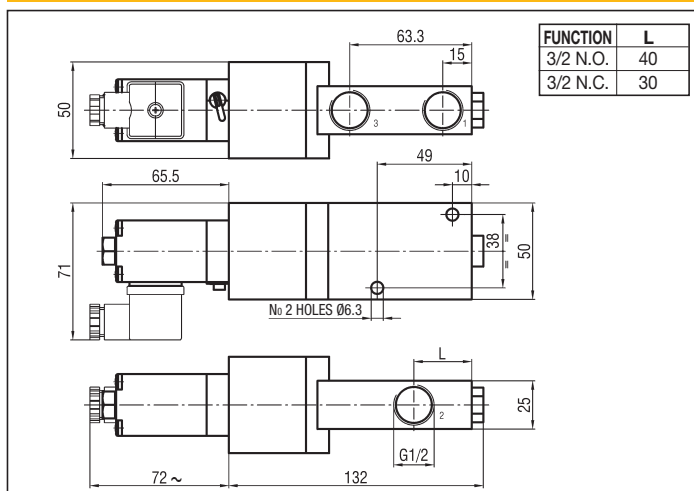
P.S.: ADD AT THE TYPE OF THE VALVES 3/2 THE LETTER "H" BETWEEN THE LETTERS "K" AND "A" (OR "C") TO ORDER 2/2 N.O. (OR 2/2 N.C.) VALVES.

E.G.: UKHA 2/20; UKHC 2/20

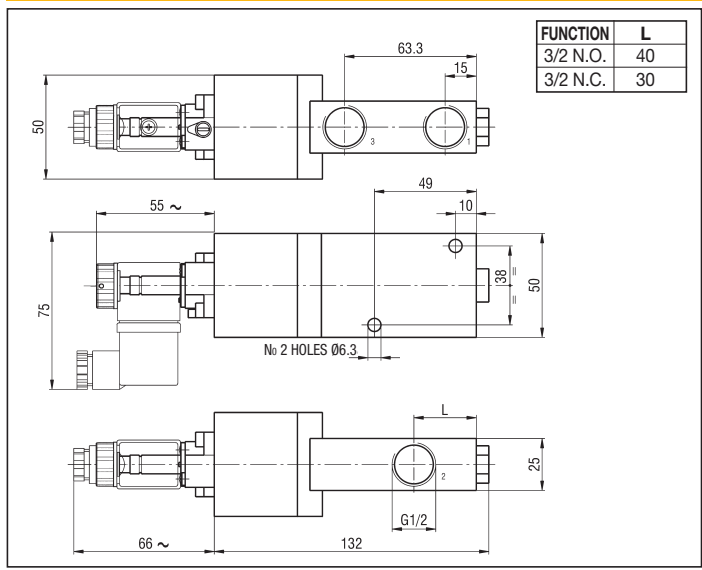
### 3 PORT SMALL SOLENOID WITH UMCSV



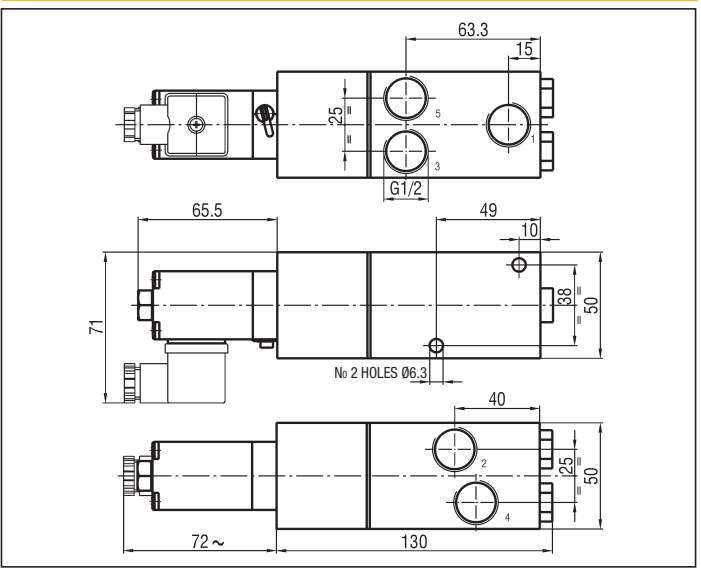
### 3 PORT BIG SOLENOID WITH ULCSV/R



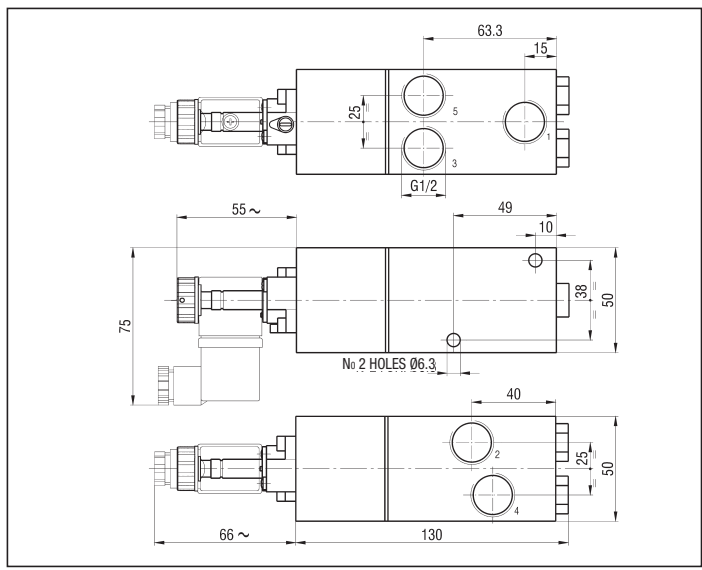
3 PORT BIG SOLENOID WITH C/USCSVG



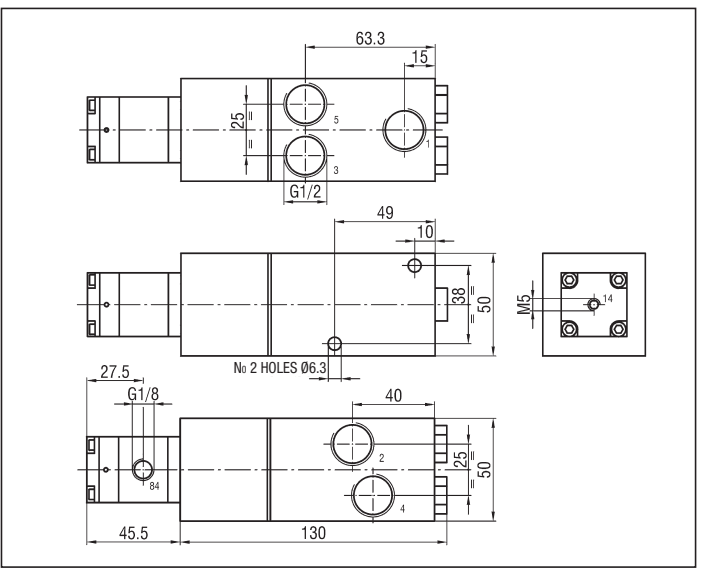
5 PORT WITH ULCSV/R



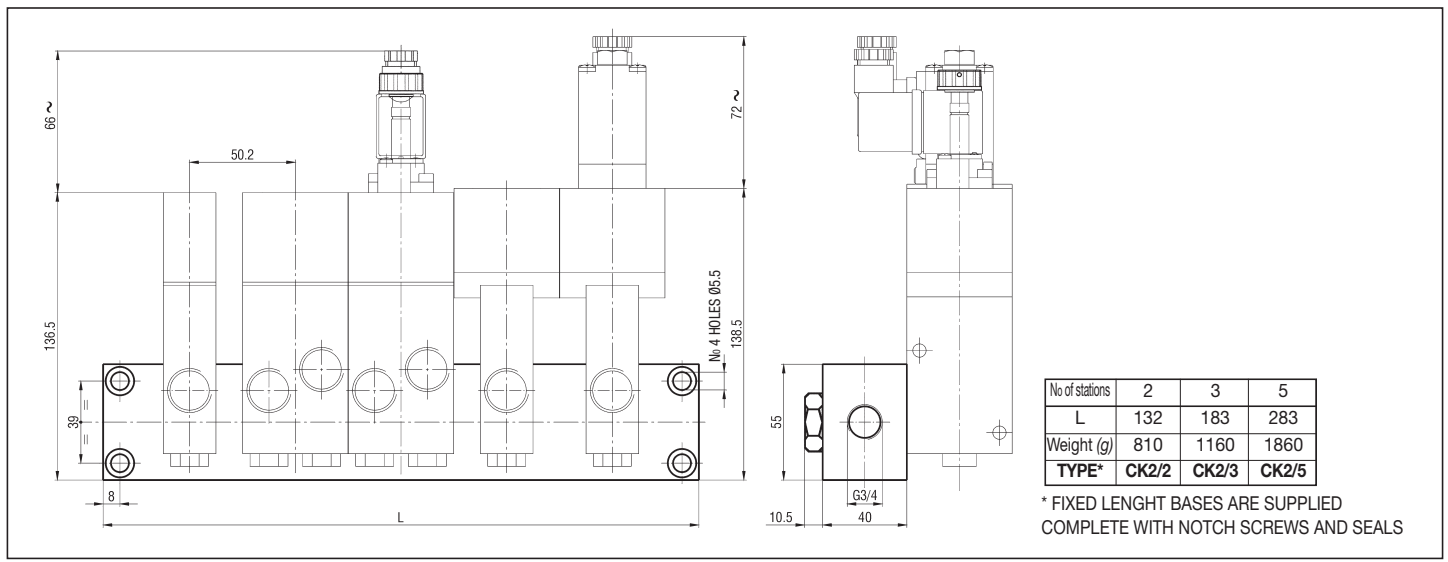
5 PORT WITH C/USCSVG



5 PORT WITH XVF4



FIXED LENGTH BASE FOR MANIFOLD MOUNTING OF VALVES G 1/2 - CK2





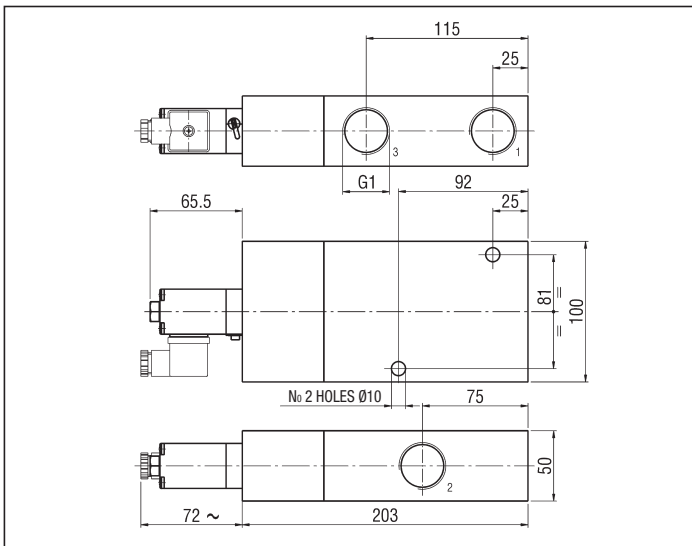
## SOLENOID ACTUATED VALVES G 1 - 2, 3 and 5 PORT

Symbol	Function	Controls		Response time at 6 bar (ms)		Flow rate at 6 bar $\Delta P = 1$ bar (l/min)	Weight (g)	TYPE*
		Pilot	Return	Energized	De-energized			
	3/2 N.O. monostable	Small solenoid	Mechanical spring	40	65	11300	2600	UKA 1/U**
	3/2 N.C. monostable	Small solenoid	Mechanical spring	40	65	7800	2550	UKC 1/U**
	5/2 monostable	Solenoid	Mechanical spring	40	70	8050	5100	UKCA 1/U**

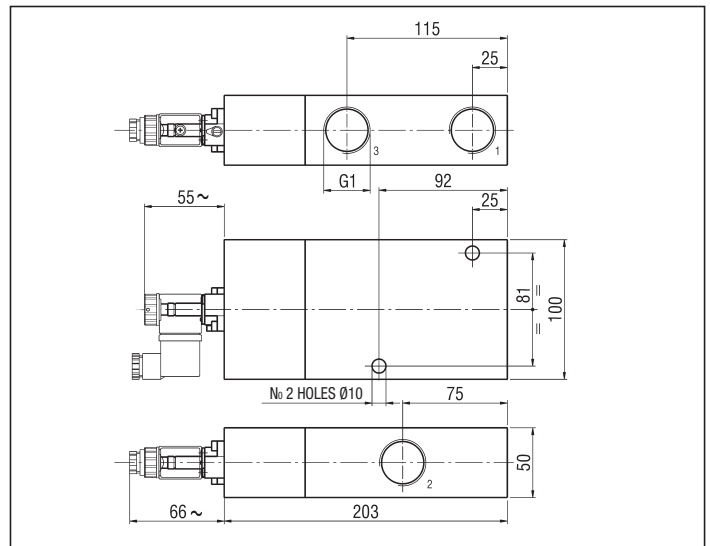
\***/EX** Consistent with the ATEX directive II 2GD c T5 T100°C -20°C ≤ T<sub>a</sub> ≤ 60°C E.G.: **UKCA1/U/EX**

\*\* THE TYPES OF THE SOLENOID VALVES DO NOT INCLUDE THE PILOTING SOLENOID VALVES (SEE ON PAGE 2.6 FOR "ULCSV/R" AND ON PAGE 2.16 FOR "C/USCSVG") WHEREAS USING AS PILOT THE VALVE "XVF4" THE RESULT IS A LOW PRESSURE PILOT ACTUATED VALVE (FOR "XVF4" - SEE ON PAGE 3.37) P.S.: ADD AT THE TYPE OF THE VALVES 3/2 THE LETTER "H" BETWEEN THE LETTERS "K" AND "A" (OR "C") TO ORDER 2/2 N.O. (OR 2/2 N.C.) VALVES. E.G.: **UKHA 1/U; UKHC 1/U**

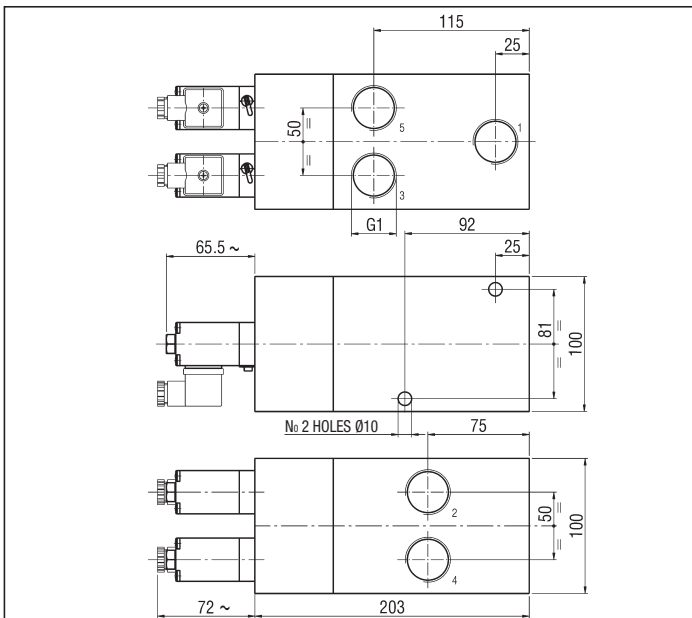
### 3 PORT WITH ULCSV/R



### 3 PORT WITH C/USCSVG



### 5 PORT WITH ULCSV/R



### 5 PORT WITH C/USCSVG

